

TECHNICAL FILE

SLIM & FIT BODY EXPERTISE

RESHAPING & SPECIALIZED FORMULAS



SLIM & FIT BODY CARE EXPERTISE



THE DIFFERENT PARAMETERS OF THE CELLULITE FORMATION

1. Adipocytes, fatty cells
2. The adipocyte, a secretory cell
3. Expansion of adipose tissue
4. The lymphatic system
5. The origins of cellulite
6. Cellulite, 4 stages of development

ERICSON LABORATOIRE SOLUTIONS

- OSMO-SLIM, slimming, remineralising treatment
- CRYO-SLIM, slimming, draining treatment
- FIRM & SLIM, slimming, firming treatment

TRIPLE PEELING, body exfoliation, slimming and anti-aging treatment

PEDICARE, complete foot care

PREMEDIKL BODY CARE TOOLS

- BODY VACU-MASSAGER
- CRYO-ACTIVE BODY ROLLER
- BODY LIPO-SCULPTOR

HOME CARE PRODUCTS

- RESHAPING FORMULAS
- SPECIALIZED FORMULAS

NUTRITIONAL SUPPLEMENTS

THE DIFFERENT PARAMETERS IN CELLULITE FORMATION

We notice nowadays an increase in excess weight problems, the causes of which can be found in our eating habits, which are too rich or poorly controlled, in the sedentary lifestyle of our professional and domestic life, and in the reduction in our physical activity.

Under these conditions, our natural biological balance is disturbed and the different metabolisms are involved. The body loses tone and firmness, excessively enlarged tissues sag, and our body structure becomes heavier.

Adipose tissue and cellulite areas increase with the appearance of orange peel skin and water retention, leading to the development of oedema and inflammatory phenomena.

ADIPOCYTES, FATTY CELLS

Adipocytes develop from a line of young cells that are not yet specialized: pre-adipocytes.

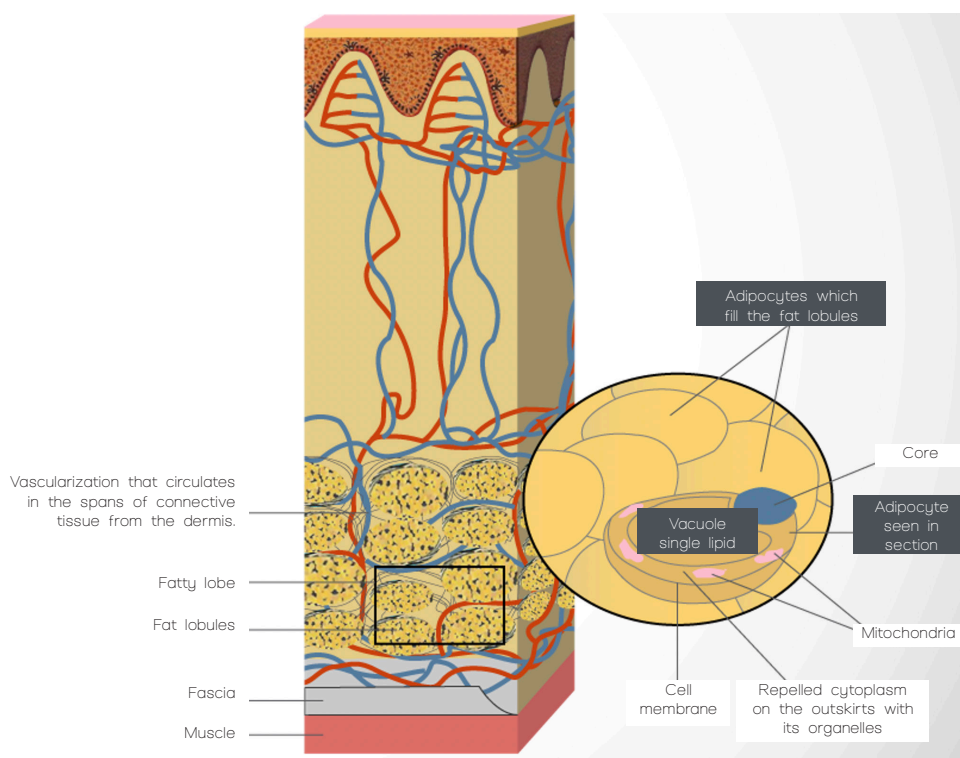
They are grouped around blood capillaries. Their evolution into adipocytes result in progressive filling with lipids.

A fatty lobule is made up of a group of adipocytes, vessels (nourishing role) and their branches.

The capillary network is highly developed, forming a net, each mesh occupied by an adipose cell. The lobule is also surrounded by fibers.

Triglycerides stored in adipocytes are synthesized from fatty acids and glycerol. This insulin-stimulated synthesis takes place from dietary triglycerides and glucose.

- Lipogenesis: the adipocyte increases its volume by absorbing fat and can multiply its size by 50 times. The $\alpha 2$ receptors located in the adipocyte membrane, extremely sensitive to insulin, promote the storage of lipids while the β receptors allow fat destocking or lipolysis.
- Lipolysis: the adipocyte can destock these triglycerides by transforming them back into fatty acids. These are normally released into the circulation and can be used by the muscles.
- Adipogenesis: adipose tissue increases by converting more and more pre-adipocytes into mature adipocytes.



THE ADIPOCYTE, A SECRETORY CELL

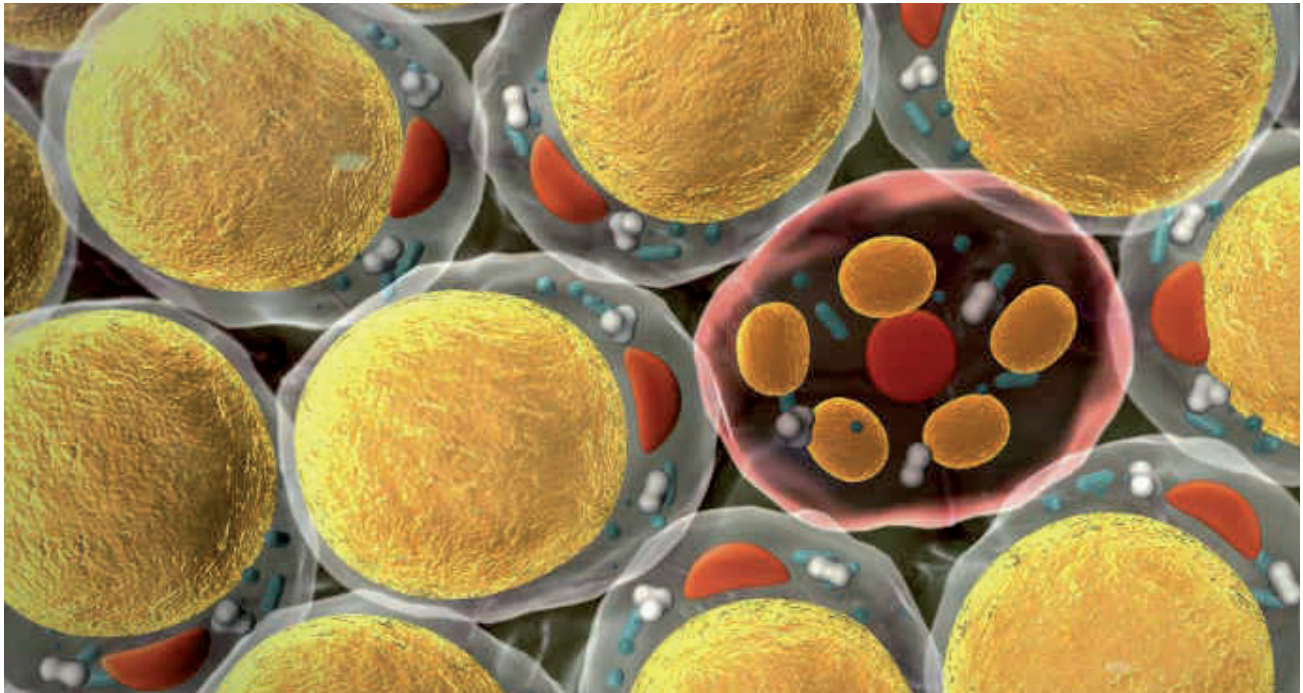
In addition to its fat storage role, we know that the adipocyte is also a secretory cell. The substances are called adipokines and act on the extracellular matrix, tissue metabolism as well as the immune response.

The adipocyte and adipose tissue secrete different types of proteins: hormones, cytokines, extracellular matrix proteins as well as proteins involved in vascularisation, lipid and carbohydrate metabolism.

In the immediate environment of the adipocyte are the dormant adipocyte precursors: the pre-adipocytes.

During adipogenesis, the formation of new adipocytes is dependent on adipokines such as lysophosphatidic acid (LPA) and autotaxin (ATX).

For the growth of pre-adipocytes and their differentiation, these adipokines are essential, because autotaxin prepares the vascular ground for the growth of the pre-adipocyte, that is to say, the formation of new blood capillaries for delivering fatty acids, and LPA allows the triglyceride filling in adipocytes.



ADIPOSE TISSUE EXPANSION

The extracellular matrix of adipose tissue is made up of numerous structural fibrous proteins (collagens - elastin), adhesion fibrous proteins (fibronectin and laminin) and glycoproteins (GAG, proteoglycans).

During the process of adipocyte differentiation, the pre-adipocyte undergoes significant morphological changes which are accompanied by the remodelling of the extracellular matrix.

To reshape the extracellular matrix, the adipocyte secretes metalloproteinases capable of breaking down fibres and glycoproteins. A specific metalloproteinase, MT1-MMP, has been demonstrated to regulate adipocyte differentiation and the development of adipose tissue.

It also modulates the rigidity of peri-cellular collagen and controls adipogenesis.

The development of new adipocytes is thus always to the detriment of the surrounding support fibres (collagens - fibronectin).

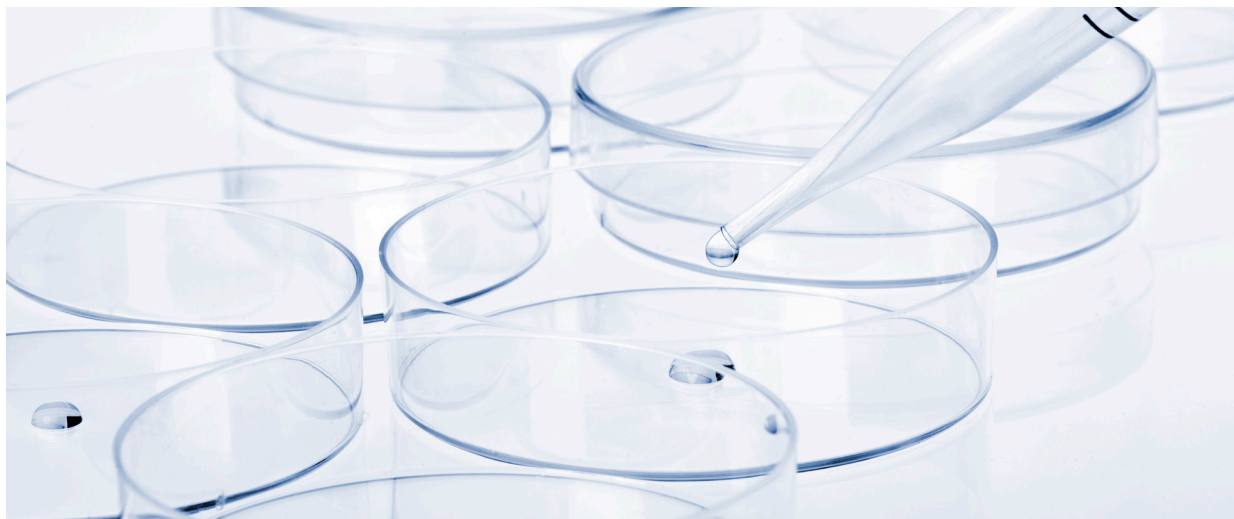
The loss of firmness and elasticity of adipose tissue is also a factor promoting its expansion: the less fibronectin there is in the adipose tissue, the more adipocytes can develop.

OXIDATIVE STRESS AND INFLAMMATION

Under normal conditions, our bodies constantly produce oxidative molecules which are most often derived from oxygen.

This endogenous production of free radicals is increased under the influence of various factors (tobacco, stress, pollution, solar radiation, etc.), and our bodies are subjected to oxidative stress. As a result, the enzymatic systems (SOD, catalase, etc.) naturally existing in our bodies to combat free radicals are quickly overwhelmed.

Free radicals are capable of oxidative chain reactions and provoke tissue inflammation, in response fat storage or lipogenesis increases.



Classically, the liver and lymphoid organs are considered the main sources of inflammatory factors production. However, recent work shows that adipose tissue also produces numerous inflammatory factors.

During adipocyte hypertrophy, we notice an important increased secretion of pro-inflammatory agents: adipocytokines or adipokines such as $\text{TNF-}\alpha$ (Tumor Necrosis Factor) and IL-6 (Interleukins).

The hypertrophy of fat cells leads to the gradual onset of a low-intensity but chronic inflammatory state, resulting in hypoxia (decrease in the amount of oxygen in the tissues) as a direct consequence.

A vicious circle is set in motion, leading to its amplification, causing an increase in oxidative cellular stress and, consequently, an increase in the fat storage in adipose tissue.

Especially as the adipose tissue comprising numerous hypertrophied adipocytes, which will compress the vessels, reducing the proper oxygenation of the tissues, hypoxia sets in, limiting production of ATP (adenosine tri-phosphate), and leading to increased production of free radicals, themselves oxidative stressors amplifying hypoxia.

Cellulite treatment should systematically include work on the adipocyte combined with stimulation of the venous and lymphatic return circulation, as well as stimulation of the support fibres of adipose tissue.

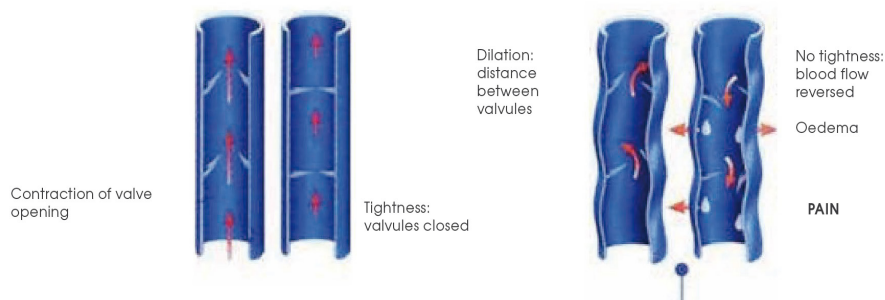
THE LYMPHATIC SYSTEM

When the blood enters into the tissues to nourish them, it allows some of its plasma to pass through the walls of the capillaries, because it's mainly in the plasma that nutrients are found to nourish the cells.

In addition to this amount of nutrient plasma, the blood also filters out a large number of white blood cells. This fluid, made up of blood plasma and white blood cells, travels through all the body's tissues, nourishing every cell and intervening in the infection processes. After fulfilling its role, this same liquid, laden with waste and toxins, follows a network of vessels that form the lymphatic system. It can be compared to a mesh network, like a net immediately under the skin which collects the excess fluid and toxins to send them into the larger vessels, located deeper. They are provided with a system of valves like veins.

These vessels empty their contents into the ganglion nodes, true reservoirs which filter, cleanse and return the purified lymph to the venous circulation.

The lymph nodes, located in the joints of the limbs and near the viscera, are veritable factories for processing waste carried by the lymphatic system.



Unlike the blood system, the lymphatic system does not have an organ that acts as a pump. Lymph circulation results from movements of the body, contractions of muscles and smooth fibres of the lymphatic walls vessels. The larger vessels have valves to prevent backflow. Its transport is slower than blood circulation, and the pressure in the lymphatic vessels is relatively low. So it's very important to have physical activity to facilitate lymphatic circulation.

More than twenty litres of water are filtered every day through the arterial capillaries to then be reabsorbed by our venous and lymphatic capillaries. This requires a perfect balance between the amount of water filtered from the arterioles to the fatty tissue, and that which is reabsorbed from the fatty tissue to the venules and lymphatic capillaries.

Thus, an unbalanced diet, insufficient water absorption and lack of activity create an excessive amount of waste in the body and the tissue's inability to neutralise it. This causes engorgement of toxins in the tissues, and consequently, causes water retention, oedema, swelling and inflammation, promoting the development of cellulite.

In the event of poor venous return or lymphatic insufficiency, some of the filtered water remains in the surrounding tissues.

Clusters of fat cells, trapped in connective tissue partitions, compress blood and lymphatic vessels and interfere with the elimination of toxins.

This is the start of a vicious circle in which enlarged fat cells compress the microvascular system, causing more fluid to leak out. The compressed veins widen, their walls become permeable, causing stagnation of fluids in the lower body that clog the tissues. It also induces poor cellular oxygenation (or hypoxia), which causes biochemical reactions related to oxydative stress, leading to tissue inflammation (increased lipogenesis).

One of the consequences of the passage into the inter-adipocyte tissues of water and high molecular weight proteins is glycation of the collagen fibres, promoting cellulite fibrosis.

THE ORIGINS OF CELLULITE

ENDOCRINE: hormonal imbalance during the different stages of a woman's life (puberty, pregnancy, oral contraception, menopause)

GENETIC: influence on the distribution of fat mass. People who are severely overweight have cells capable of transforming into adipocytes more quickly than those of other subjects.

FOOD HABITS AND LIFESTYLE: poor eating habits, skipped or unbalanced meals, alcohol and tobacco consumption, lack of physical activity, etc. all cause a fatty excess factor of health problems in the longer or shorter term.

NEURO-VEGETATIVE: certain nervous, emotional, anxious issues or a stressful pace of life can promote lipogenesis.

STRESS: in risk situations, several hormones boost the body to help it overcome the danger. The best known of these is adrenaline, which mobilises all available energy. As for cortisol, it's produced en masse within minutes of the adrenaline rush. Its effects are less noticeable but extremely important. It actively participates in energy production by converting fat stores into sugars.

But the body doesn't really differentiate between all stressful situations. And because of this, many annoying or constraining situations in everyday life are perceived as stress.

This leads to a frequent excess of cortisol, detrimental to individual well-being and health by promoting lipogenesis and therefore adipogenesis.

Weight gain resulting from cortisol surges during repeated stress is mainly concentrated around the waist.

MECHANICAL AND VASCULAR: non-ergonomic positions, vascular hypotonia and circulatory problems promote water retention and the development of cellulite.

AGE: stiffening of collagen fibres, loss of flexibility and elasticity of tissues amplify the phenomenon of cellulite installation.



CELLULITE FORMATION: FOUR STAGES

Cellulite results from a set of physiological imbalances that are self-sustaining. Thin or round, few women are spared.

FIRST STAGE:

It's characterized by a swollen hypodermis due to water retention caused by the walls' permeability of the blood vessels. The adipocytes become full of lipids and grow bigger. They form fatty nodules which disrupt microcirculation, which accentuates oedema: appearance of orange peel skin only visible when pinch the skin between 2 fingers.

STAGE II:

The adipocyte nodules get bigger. Cross-linked collagen fibers merge. The accumulation of interstitial fluid increases the heterogeneity of the subdermal area, which manifests itself on the skin surface as the appearance of orange peel skin which is visible while standing but disappears when lying down.

STAGE III:

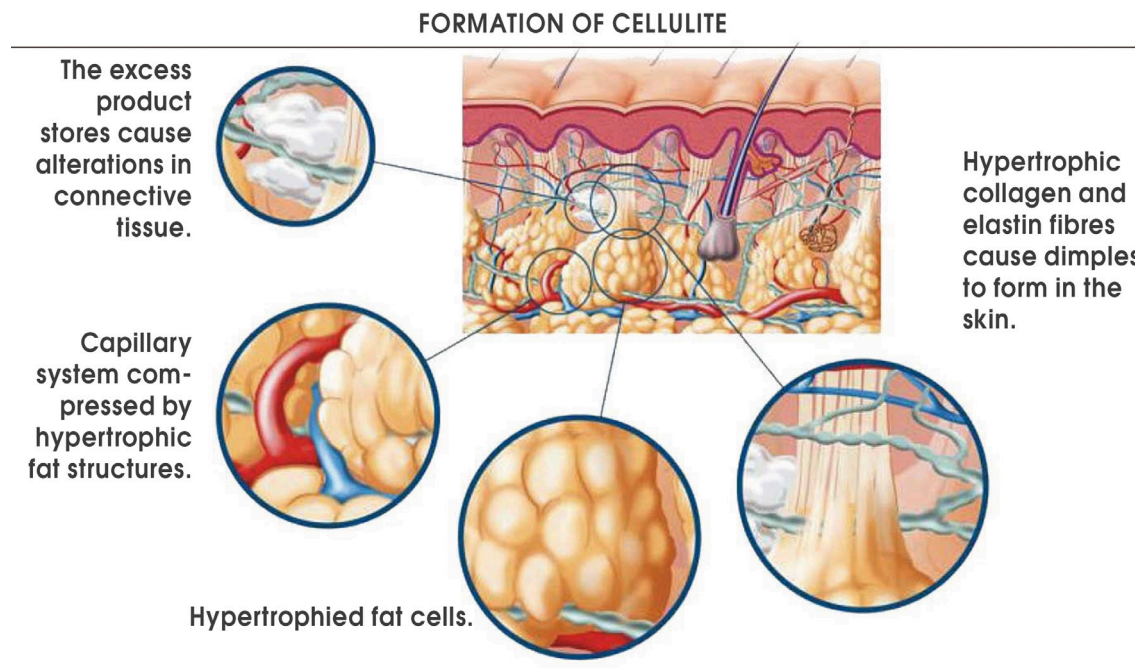
Vascular damage induces metabolic alteration and thinning of connective tissue in the dermis due to reduced protein synthesis.

Adipocytes are micro-nodules surrounded by a thick, hard layer of collagen (fibrosis). Palpation clearly shows the phenomenon of orange peel skin. Orange peel skin permanently visible.

STAGE IV:

The micro-nodules combine to form macro-nodules. People experience pain because of the compressed nerves by the nodules (inflammatory reactions and oxidative stress). The skin is hard, the volumes large, the appearance very irregular, and «holes» are deep.

The loss of firmness is caused by a degradation of collagen and elastin (glycation).





ERICSON LABORATOIRE
SOLUTIONS

SLIM & FIT
BODY EXPERTISE

OSMO-SLIM PROFESSIONAL TREATMENT



OSMO-SLIM is a specific treatment based on osmotic balance, body remineralization and aromatic well-being.

The OSMO-SLIM treatment combines a technique of exfoliation and skin detox with a prolonged thermal wrap rich in sea salts and flower and fruit extracts. This treatment has an effective osmotic effect on engorged tissues. An active elimination factor, osmosis is an excellent alternative to slimming treatments. This phenomenon also helps detoxify the body, erase cellulite and improve skin quality.

THE BENEFITS OF SALT

Thanks to the richness of its natural composition, Guérande salt provides many benefits for the skin:

- Recharges the skin with minerals, essential to lose weight,
- Antioxidant, soothes states of stress and nervousness,
- Activates microcirculation, relieves muscle tension,
- Detoxifies, and reduces water retention.

THE BENEFITS OF ESSENTIAL OILS

Essential oils are concentrated plant essences extracted by steam distillation.

Depending on the part of the plant used, there are different molecules with specific properties: flower, leaf, or zest. They have various properties such as: antiseptic, depurative and antispasmodic.

THE OSMOTIC PHENOMENON

Skin osmosis is a phenomenon of water diffusion through the skin. In fact, osmosis is the migration of water from a medium that isn't very concentrated (in minerals, for example) to a more concentrated medium, so that the concentration on either side of the membrane is equivalent, which is what we call the osmotic pressure.

As such, when salt crystals are applied to the skin, the salt concentration is higher on the surface of the skin than in the epidermis. As salt crystals cannot diffuse through the skin, it's water by osmosis that will migrate from the inside of the skin to the outside environment to unclog the tissues.

Since the skin is permeable to minerals, this difference in concentration between the skin surface and the deep layers of the skin, induced by salt, will cause the migration of ions (minerals) from the skin's surface to the subcutaneous layers.

By these two different diffusion phenomena, the skin is thus de-infiltrated, recharged with minerals and regains its functional balance. A true macro and trace element cure, OSMO-SLIM treatment remineralises the body for in-depth revitalisation and facilitates slimming.

RELAXING WRAP SALTS

COSMETIC EFFECTS

- Salts with an exfoliating, cleansing, remineralizing and relaxing action.
- Prepares the body for OSMO-SLIM wrap.

DIRECTIONS FOR USE

- To be used, mixed with RELAXING BODY OIL E250. Refer to professional protocol.

COMPOSITION

- GUÉRANDE SALT: fine, natural salt, very rich in minerals.
- TAHITIAN VOLCANIC SAND: fine black sand for gentle exfoliation.
- LAMINARIA DIGITATA EXTRACT: rich in trace elements (Magnesium, Iodine, Phosphorus, Zinc, Sulphur..). Natural softener and moisturizer.

PRESENTATION

- Retail: not available.
- Professional use: 1kg jar. Ref. E252

RESHAPING WRAP SALTS

COSMETIC EFFECTS

- Remineralizing wrap to be used mixed with RESHAPING BODY OIL E251.
- Thanks to its osmotic power and the synergistic action of papaya combined with pineapple, it has a decongestant effect.
- Slimming and purifying, it also promotes the elimination of toxins. Activates cellular exchanges.

DIRECTIONS FOR USE

- To be used with the Reshaping body oil. Refer to professional protocol.

COMPOSITION

- GUÉRANDE SALT: fine, natural salt, very rich in minerals.
- PAPAYA POWDER: detoxifying property. Reduces orange peel skin formation. Antioxidant.
- PINEAPPLE POWDER: detoxifying property, helps reduce water retention and cellulite.
- CALENDULA PETALS: softening, anti-inflammatory, draining action.

PRESENTATION

- Retail: not available.
- Professional use: 1kg jar. Ref. E253.



RELAXING BODY OIL

COSMETIC EFFECTS

- Enriched with relaxing, calming essential oils, it provides relaxation and well-being.

DIRECTIONS FOR USE

- To be used with the Relaxing wrap salts. Can also be used alone as a massage oil. Refer to professional protocol.

COMPOSITION

- MAIZE OIL: moisturizing, nourishing action. Soothes dry areas.
- APRICOT KERNEL OIL: emollient, nourishing and revitalizing.
- SUNFLOWER OIL: rich in omega 6 and antioxidant vitamin E, it strengthens the barrier function and helps preserve skin hydration.
- MEADOWSWEET EXTRACT: draining property, helps reduce cellulite and water retention. Softens and nourishes the skin.
- SOUTH AFRICAN ORANGE ESSENTIAL OIL: soothing, calming.
- HARPAGOPHYTUM EXTRACT: analgesic, sedative, and diuretic properties.
- LAVENDER ESSENTIAL OIL: calming, soothing, healing, antiseptic and anti-stress.
- BERGAMOT ESSENTIAL OIL: calming and purifying, healing, and anti-stress.
- ROMAN CHAMOMILE ESSENTIAL OIL: soothing, antiseptic, anti-stress.
- YLANG-YLANG ESSENTIAL OIL: soothing, regenerating and draining.

PRESENTATION

- Retail: not available.
- Professional use: 500ml bottle. Ref. E250.

RESHAPING BODY OIL

COSMETIC EFFECTS

- Enriched with lipolytic essential oils, anti-retention, and toning.
- Promotes slimming, decongests, and helps to reduce cellulite.

DIRECTIONS FOR USE

- To be used with the Reshaping scrub salts. Can also be used alone as a massage oil. Refer to professional protocol.

COMPOSITION

- MAIZE OIL: moisturizing, nourishing action. Soothes dry areas.
- APRICOT KERNEL OIL: emollient, nourishing and revitalizing.
- SUNFLOWER OIL: rich in omega 6 and antioxidant vitamin E, it strengthens the barrier function and helps preserve skin hydration.
- FUCUS EXTRACT: rich in iodine and minerals. Lipolytic, stimulates circulation and promotes waste elimination.
- GRAPEFRUIT ESSENTIAL OIL: energizing, antiseptic, lipolytic, tones the skin and reduces orange peel effect.
- SCOTCH PINE ESSENTIAL OIL: stimulating, decongestant, regenerating effect.
- GERANIUM ESSENTIAL OIL: slimming, reduces water retention, helps prevent stretch marks, tones.
- INDIAN SANDALWOOD ESSENTIAL OIL: decongestant, soothing and regenerating.
- HORSETAIL EXTRACT: rich in potassium, silica, and minerals, lipolytic. Promotes tissue regeneration, healing.

PRESENTATION

- Retail: not available.
- Professional use: 500ml bottle. Ref. E251.





OSMO-SLIM: PROFESSIONAL TREATMENT PROTOCOL

Open the heating blanket, cover it with a PLASTIC SHEET E07

Prepare the quantities of salts and oil needed:

- EXFOLIATION: Mix in a bowl 1 dose of RELAXING WRAP SALTS E252 with 2 doses of RELAXING BODY OIL E250.
- WRAP: Mix 4 to 6 doses of RESHAPING WRAP SALTS E253 in a bowl with 2 to 3 doses of RESHAPING BODY OIL E251 as needed.

<div>1</div> 	<p>FRONT SIDE EXFOLIATION</p> <p>Apply the scrub all over the body, start the exfoliation on the legs, then the stomach, chest, and arms in large and gentle movements. Repeat the motions several times.</p>
<div>2</div>	<p>BACK SIDE EXFOLIATION</p> <p>With the same technique of long strokes, start the scrub on the feet and legs, buttocks, then the back, moving up towards the shoulders.</p>
<div>3</div> 	<p>WRAP</p> <p>Apply the wrap on the back and then the front side with gentle pressure.</p> <p>Cover with the plastic sheet, then the heating blanket. Leave the client to rest for 20 minutes then, with the heating blanket turned off, leave the client wrapped to relax for 10 minutes.</p> <p>Clean with warm, damp towels or the client takes a shower.</p>

4-TREATMENT SESSION

TREATMENT DURATION:
60 MINUTES

TREATMENT FREQUENCY:
ONCE A WEEK

PROFESSIONAL CRYO-SLIM TREATMENT

Medical inspiration for slimming treatments

The effectiveness of the CRYO-SLIM treatment is based on thermal shock therapy with alternating hot and cold effect.

In fact, with heat, the vasodilation obtained promotes the slimming process by accelerating the absorption of lipolytic active ingredients and facilitating lipolysis.

Vasoconstriction stimulates the elimination of released fatty acids by lipolytic active ingredients.

This results in a reduction in the cellulite resistant to diet and exercise, an intense drainage of excess liquids and an improvement in micro-circulation helping to relieve the discomfort of heavy legs.

Hard cellulite, also called gynoid lipodystrophy, is characterized by modifications of connective fibers, loosing their stretchiness due to the stiffening of the collagen fibers that surround the hypertrophied adipocytes (formation of bumps and hollows characteristic of «orange peel» skin).

It's painful pinching the skin because the nerve network is crushed by the excess of fatty tissue.

The fatty lobules also compress the blood and lymphatic vessels, disrupting the evacuation and elimination of toxins. This slow circulatory process causes swelling and oedema of the lower limbs.

Non-evacuated toxins clog the tissues and cause inflammatory phenomena, which lead to an increase in fat storage.

For adequate treatment of cellulite:

- Reducing fibrosis, means separate the adipocytes from each other and by reducing the isolation of adipocytes, make them accessible to the lipolytic active ingredients.
- Stimulating the lymphatic and venous circulation which allow decongestion of adipose tissue and ease the transport of fatty acids and toxins for their elimination.



THERMO-ACTIVE STARTER SERUM

COSMETIC EFFECTS

- Thanks to its thermo-slimming action, it generates vasodilation of the skin's microcirculation to promote the passage of fat into the blood circulation for elimination.

DIRECTIONS FOR USE

- Use the THERMO-ACTIVE STARTER SERUM on cellulite areas, a more or less intense heating and reddening effect may occur depending on skin sensitivity.

COMPOSITION

- LIPOCARE: combination of bupleurum chinense, caffeine and anti-cellulite coenzyme A, firming, promoting the breakdown of fatty acids.
- GREEN TEA EXTRACT: promotes the removal of accumulated fat, draining.
- IVY EXTRACT: improves skin tone, anti-cellulite, draining.
- METHYL NICOTINATE: rubefacient, vasodilator.

PRESENTATION

- Retail: 200ml bottle Ref. E276.
- Professional use: 500ml bottle Ref. E262.

CRYO-ACTIVE ENERGIZING LEG GEL

COSMETIC EFFECTS

- Care cream to reduce localized cellulite, heavy legs, with swelling, pain sensations, and discomfort.

DIRECTIONS FOR USE

- Apply the gel by moving upwards from the ankles to the thighs with a draining massage. Do not use on pregnant or breastfeeding women. Refer to professional protocol.

COMPOSITION

- REMODULIN: phyto-complex derived from the petals of bitter orange, lipolytic and draining. Acts on local micro-circulation.
- SCULPTOSANE: lipolytic, draining, limits the expansion of adipose tissue.
- GUARANA EXTRACT (Paullinia cupana): lipolytic thanks to its caffeine concentration as well as its theobromine, theophylline and xanthine compounds.
- LOTUS: antioxidant and soothing thanks to its high concentration of flavonoids.
- MACADAMIA OIL: regulates the lymphatic and blood system.
- MENTHOL: decongestant, anti-inflammatory.
- CAMPHOR: anti-inflammatory.

PRESENTATION

- Retail: 200ml tube Ref. E275.
- Professional use: 200ml tube Ref. E263.



CRYOTHERAPY EFFECT SOLUTION

COSMETIC EFFECTS

- Enriched with venotonic, anti-retention active ingredients, this draining formula acts quickly on congested tissues.
- Thanks to the mint and camphor extracts, immediate freshness is felt upon application.

DIRECTIONS FOR USE

- Dilute in water to impregnate the CRYOTHERAPY EFFECT COMPRESSIVE BANDAGES E265.
Refer to professional protocol.

COMPOSITION

- REDULITE: draining, lipolytic.
- MENTHOL: decongestant, anti-inflammatory.
- CAMPHOR: anti-inflammatory.
- BLACKCURRANT EXTRACT: rich in omega 3 and 6, protects the blood vessels.
- BOREAL BLACKBERRY EXTRACT: rich in essential fatty acids and vitamin C, anti-free radical.

PRESENTATION

- Retail: not available
- Professional use: 500ml bottle Ref. E264.

LEG RESFRESHING RELIEF

COSMETIC EFFECTS

- Strengthens the walls of blood capillaries and facilitates blood circulation.
- Perform a light massage with LEG RESFRESHING RELIEF, from the ankle to the top of the thigh.
- Focus with light circular massages on damaged areas.

DIRECTIONS FOR USE

- Proceed with a light massage with the LEG RESFRESHING RELIEF, moving upwards from the ankle to the thigh.
- Insist with light circular massages on the congested areas.

COMPOSITION

- PHYTONINE: restores resistance and capillary elasticity.
- RHODOFILTRAT PALMARIA: activates microcirculation to ease fat elimination.
- ESCULOSIDE: increases capillary resistance, draining effect.
- MENTHOL: decongestant, anti-inflammatory.
- CAMPHOR: anti-inflammatory.
- SOUTH AFRICAN ORANGE ESSENTIAL OIL: soothing, calming.
- ITALIAN LEMON ESSENTIAL OIL: purifying, antiseptic, rich in potassium, stimulates the fibroblasts.
- PEPPERMINT ESSENTIAL OIL: refreshing, anti-fatigue, regenerating effect.
- GINKGO BILOBA EXTRACT: tonic and draining properties, rich in flavonoids with antioxidant and soothing properties.
- HAMAMELIS EXTRACT: soothing, relieves skin irritations. Excellent venous protector.
- RED VINE EXTRACT: rich in tannins, flavonoids, and anthocyanins, known for its anti-free radical and decongestant properties.

PRESENTATION

- Retail: not available
- Professional use: 200ml tube Ref. E266.



CRYO-SLIM: PROFESSIONAL TREATMENT PROTOCOL

Apply a plastic sheet E07.

1		PREPARATION OF COMPRESSION BANDAGES In a bowl, cover 2 CRYOTHERAPY EFFECT COMPRESSION BANDAGES E265 with cold water. Add 30ml of CRYO-ACTIVE CONCENTRATE E264. Leave to soak.
2		SERUM With the client lying on her side, apply the THERMOACTIVE STARTER SERUM E262 on the thighs and buttocks, then, the client lies on her back for the application of the serum on the stomach and thighs. Close the plastic and leave for 10 minutes. Open the plastic.
3		BACK SIDE Apply the BODY LIPO-SCULPTOR E268 or the CRYO-ACTIVE BODY ROLLER E339 in light upward movements as required.
4		MASSAGE Apply CRYO-ACTIVE ENERGIZING LEG GEL E263 on the feet, legs and buttocks. Perform a slimming and circulatory massage.
5		FRONT SIDE SERUM Apply the BODY LIPO-SCULPTOR E268 or CRYO-ACTIVE BODY ROLLER E339 in light upward movements as required.
6		MASSAGE Apply CRYO-ACTIVE ENERGIZING LEG GEL E263 on the feet, legs and thighs. Perform a slimming and circulatory massage.
7		LEG BANDAGES Wrap each leg with bandages impregnated with CRYOTHERAPY EFFECT SOLUTION E264. Start from the toes towards the thigh. At the knee, release the pressure. Leave on for 20 minutes. Remove the bandages and dry the legs with a towel.
8		MODELLING Apply LEG REFRESHING RELIEF E266 in upward movements on the legs and buttocks.

4-TREATMENT SESSION

TREATMENT DURATION:
60 MINUTES

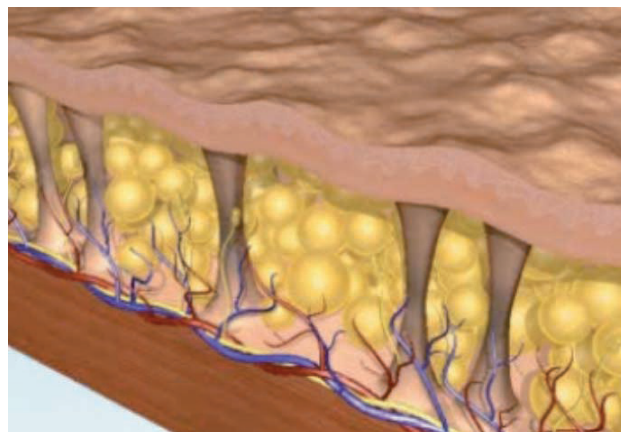
TREATMENT FREQUENCY:
ONCE OR TWICE A WEEK

FIRM & SLIM PROFESSIONAL TREATMENT

When fat intake is too great to be stored in our adipocytes, they multiply.

The adipocyte comes from a mesenchymal stem cell when it differentiates, it transforms into a pre-adipocyte fibroblast, and then it becomes a mature adipocyte, the only cell capable of storing triglycerides. Pre-adipocytes produce type I collagen while differentiated adipocytes lose the ability to produce this collagen I and get specialized in fat storage.

During the development of cellulite, there is a drastic decrease in fibronectin due to the influence of the different adipokines secreted by the adipocyte. Indeed, the expansion of adipose tissue is always to the detriment of the support fibers: new adipocytes needing space to develop, mature adipocytes secrete adipokines which break down these support fibers, freeing up space for the new adipocytes. Cellulite increases somewhat, provoking tissue flaccidity.



It's important to provide lipolytic active ingredients capable of releasing fatty acids from adipocytes into the circulatory systems able to eliminate them. The reduction in adipocyte size acts as a natural brake on adipogenesis. The supply of active ingredients that maintain pre-adipocytes in the state of cells capable of producing collagen I is also a fundamental element in restoring or recovering skin firmness.

The combination of slimming and firming care is a key element in the reshaping body treatment. Indeed, providing firmness is fundamental to limit the expansion of adipose tissue and is also essential in restoring its function balance.



PRIMING BODY SCRUB

COSMETIC EFFECTS

- This scrub with sugar crystals provides total elimination of dead cells and potentiates absorption of slimming, firming active ingredients.

DIRECTIONS FOR USE

- Apply the scrub all over the body and exfoliate with gentle and circular movements, focusing on cellulite areas.
- Then, with wet hands, continue the exfoliation, with the action of water, the sugar crystals dissolve. Continue the exfoliation until the crystals are completely removed. Dry with a towel.

COMPOSITION

- INTENSLIM: combination of wild ginger, globularia cordifolia and caffeine, stimulates the synthesis of desnutrine, the key enzyme activating lipolysis, soothes and promotes elastin synthesis, firming.
- GUARANA EXTRACT (Paullinia cupana): lipolytic thanks to its caffeine concentration as well as its theobromine, theophylline and xanthine compounds.
- KIGELIA: rich in flavonoids, it's an excellent venous protector. It stimulates the production of collagen, improves skin tone, firming. Powerful anti-free radical.

PRESENTATION

- Retail: not available.
- Professional use: 1kg jar Ref. E257.

SHAPE & FIRM BODY SERUM

COSMETIC EFFECTS

- Concentrated double action serum: slimming and firming. Enriched with active ingredients reducing fat storage and promoting lipolysis.
- It helps stimulate collagen synthesis.

DIRECTIONS FOR USE

- Apply to targeted areas with a light massage.
- See professional protocol.

COMPOSITION

- PRO-SVELTYL: extract from the leaf of lotus (Nelumbo nucifera), an active ingredient that promotes fat loss by activating lipolysis, limits inflammation of adipose tissue.
- CORALLINE CONCENTRATE (Corallina officinalis): thanks to its organic calcium contained, it helps limit the differentiation of pre-adipocytes into mature adipocytes for increased firmness.
- ROOIBOS LEAF EXTRACT (Aspalathus linearis): known as red tea or Masai tea, very rich in polyphenols and minerals (iron, potassium, calcium, copper, zinc, manganese, and sodium). Antioxidant, anti-free radical and anti-inflammatory properties.
- GUARANA EXTRACT (Paullinia cupana): lipolytic thanks to its concentration in caffeine as well as its theobromine, theophylline extracts.
- RED VINE LEAF EXTRACT (Vitis vinifera): rich in tannins, flavonoids, and anthocyanins, is known for its anti-free radical and decongestant effects.

PRESENTATION

- Retail: not available.
- Professional use: 200ml tube Ref. E260.



BODY CONTOURING WAX-TO-OIL

COSMETIC EFFECTS

- Anti-cellulite massage cream, enriched with draining active ingredients. Action on congested tissues and facilitates elimination of released fatty acids.

DIRECTIONS FOR USE

- Apply a knob of product and perform a long draining massage over the entire body. Refer to professional protocol.

COMPOSITION

- TIMILINE: activates lipolysis, helps limit the differentiation of pre-adipocytes into mature adipocytes. Stimulates the transport and elimination of released fatty acids to facilitate their elimination.
- HORSE CHESTNUT: soothing, protecting capillaries, draining.
- RUSCUS: soothing and draining effect.
- HIBISCUS: antioxidant, remineralizing and moisturizing due to its richness in vitamin C, mineral salts and mucilage.

PRESENTATION

- Retail: not available.
- Professional use: 350ml jar Ref. E258.

THERMOACTIVE BODY WRAP

COSMETIC EFFECTS

- Self-heating mask enriched with lipolytic, firming active ingredients, eases better absorption of the active ingredients.
- This body mask complements and reinforces the slimming, firming and draining action of the active ingredients applied previously.

DIRECTIONS FOR USE

- Mix 450g of powder with 210ml lukewarm water and mix to obtain a smooth paste. Apply to the whole body. Refer to professional protocol.

COMPOSITION

- PAULLINIA CUPANA SEED EXTRACT: rich in caffeine, helps eliminate cellulite.
- SPIRULINA: contains vitamins A, B, E and essential fatty acids. Protects elastin and collagen fibres: provides a tightening effect and improves skin firmness.
- CAMELIA SINENSIS LEAF EXTRACT: antioxidant, stimulates microcirculation, draining. Activates cellular exchanges.
- LOTUS: antioxidant and soothing thanks to its high concentration of flavonoids.
- MAGNESIUM: participates in numerous biological reactions inside cells. Muscle relaxant and anti-stress.
- ZINC: ensures regeneration and protection of the skin.

PRESENTATION

- Retail: not available.
- Professional use: 2kg tube Ref. E259.



CONTOURING BODY CREAM

COSMETIC EFFECTS

- Slimming cream, its «Intelligent Targeted Device» or ITD technology improves the impact on adipocyte receptors.
- Specifically developed to reduce the phenomenon of glycation responsible for sagging tissue.
- Deeply regenerated, the skin regains firmness and dynamism.
- Care cream helps lighten pigment spots.

DIRECTIONS FOR USE

- Apply at the end of the professional care in light massage.

COMPOSITION

- X50 SILHOUETTE: ITD double encapsulation system, to ease slimming processes.
- WILD YAM: rich in diosgenin, reproduces the anti-aging effects of DHEA on the skin.
- FIRMIDERM: improves skin elasticity and tone, reduces skin hyper-laxity. Tissue restructuring effect.
- ANTIGLYSKIN: helps limit protein glycation and limits the action of free radicals.
- LUMISKIN: lightening agent by inhibiting calcium flow in melanocytes.
- SESAME OIL: rich in essential fatty acids and antioxidants, promotes skin hydration. Regenerating and softening.

PRESENTATION



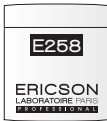



- Retail: 200ml tube Ref. E273.
- Professional use: 200ml tube Ref. E261.



PRO USE
E261

FIRM & SLIM: PROFESSIONAL TREATMENT PROTOCOL

Cover the bed with a plastic sheet E07 and a towel.

1		BACK SIDE - SCRUB Apply the PRIMING BODY SCRUB E257 to the entire body and exfoliate with circular movements. Then, wet your hands and continue the exfoliation, with the water, sugar crystals are melting. Dry the skin with a towel.
2		FRONT SIDE - SCRUB Proceed to the same exfoliation procedure on the front side.
3		SERUM Apply SHAPE & FIRM BODY SERUM E260 to cellulite areas.
4		MASSAGE Massage with BODY CONTOURING WAX-TO-OIL E258 over the entire body.
5		SUCTION CUP Proceed with the BODY VACU-MASSAGER E267, starting with the lower legs. Refer to technical protocol.
6		BACK SIDE Repeat the application of SHAPE & FIRM BODY SERUM E260 on the affected areas. Then massage with CONTOUR CONTOURING WAX-TO-OIL E258 and use the BODY VACU-MASSAGER E267 on the back.
7		WRAP Pour 350ml of THERMOACTIVE BODY WRAP E259 into a bowl and add 210ml of cold water. Apply to the entire back and then front of the body. Cover the client with a electric blanket for 20 minutes. Rinse with a warm and damp towel or shower.
8		MODELLING Apply CONTOURING BODY CREAM E261 over the entire body.

4-TREATMENT SESSION

TREATMENT DURATION:
75 MINUTES

TREATMENT FREQUENCY:
ONCE OR TWICE A WEEK

TRIPLE PEELING

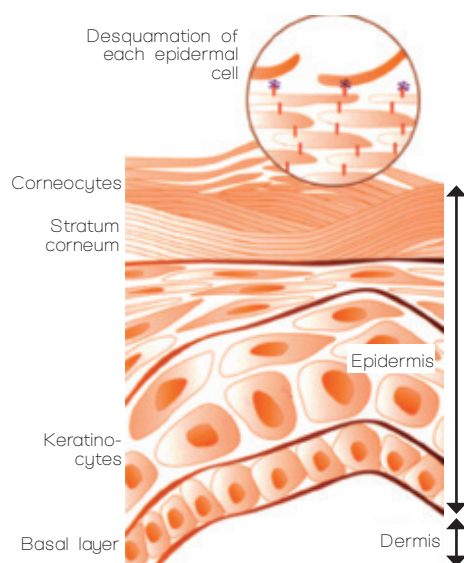
This multi-action peeling treatment is one of the essential technology to improve the skin quality.

This treatment provides:

- Mechanical action with immediate elimination of superficial layers and dead cells,
- Instant chemical smoothing action,
- Long-lasting biological action activating tissue renewal,
- A revitalizing action of skin cells and skin firming,
- A brightening action on skin pigmentation spots.

TRIPLE PEELING treatment combines 3 different technologies:

- A combination of mechanical, chemical, and enzymatic exfoliation,
- Encapsulation of collagen booster active ingredient,
- Brightening of pigment spots.



MECHANICAL PEELING consists in ridding the epidermis of its superficial layers where dead cells and metabolic waste are accumulated, which slow down the cell renewal.

It also prepares the skin for a chemical peel by facilitating the skin's absorption of alpha-hydroxy acids.

CHEMICAL PEELING renews the epidermis and helps refine the skin texture. It treats the first signs of skin aging, acts on spots of various origins and superficial scars.

AHAs improve skin structure through different actions:

- Reduction of the stratum corneum thickness,
- Stimulation of cell renewal,
- Stimulation of collagen synthesis, elastin and glycosaminoglycans.

ENZYMATIC PEELING

Enzymatic exfoliants or proteases can weaken the chemical bonds that link corneocytes to each other and "digest" keratin proteins. The activity of proteases is an essential factor of desquamation closely associated with the process of proliferation of basal cells in the germinal layer.

Nowadays, there is a new generation of enzymes: these are crosslinked, stabilized proteases.

The crosslinking of papain allows long-lasting absorption in the superficial layers of the epidermis, where the dead cells ready to be exfoliated are located.

ENCAPSULATION OF COLLAGEN BOOSTER ACTIVE INGREDIENT

Encapsulation or vectorisation of active ingredients is a technology that improves its bioavailability to protect it from degradation by skin enzymes as well as promote its passage through the cell membrane,

Our laboratories have selected a double encapsulation of glycolic acid associated with lactic acid charged with pantothenic acid combined with a copper molecule. This new technology allows deeper absorption for a stimulation of the collagen and elastin synthesis at the dermal level.

VIT.C AA2G is a combination of stabilized vitamin C with a glucose molecule.

Glucose increases the stability of ascorbic acid to heat, pH, heavy metals, and other oxidative agents.

VIT.C AA2G allows long-lasting diffusion at the core of the skin to help brighten pigment spots, complexion and increase collagen production.

It's by combining these cutting-edge techniques that TRIPLE PEELING can provide a solution to the problem of hyper-keratinized skin and excessive pigmentation.

By providing enhanced exfoliation, the absorption of active ingredients during slimming and/or firming body treatments will be optimized.



TRIPLE ACTION BODY PEELING

COSMETIC EFFECTS

- Exfoliation combining silica micro-crystals with three fruit acid derivatives: glycolic acid, salicylic acid, and lactic acid, to smooth the skin's micro-relief. Enriched with a brightening agent, this scrub helps reduce unsightly pigment spots.

DIRECTIONS FOR USE

- Exfoliate the whole body with light circular movements. Insist on rough areas and pigment spots.
- Rinse thoroughly with warm water. See professional protocol.
- Home use: apply to dry or damp skin, paying particular attention to elbows, knees, feet and thighs. Rinse with lukewarm water.
- Once or twice a week.

COMPOSITION

- **SILICA MICRO-CRYSTALS:** dermabrasion promoting cell renewal.
- **SALICYLIC ACID:** Beta-Hydroxy-Acid extracted from willow bark. Reduces skin aging signs. Keratolytic, anti-inflammatory and anti-bacterial.
- **GLYCOLIC ACID:** sugar cane extract. It's the smallest molecule of fruit acid for rapid absorption into the deep layers of the skin. Boosts the synthesis of collagen and elastin fibers. Moisturizing.
- **LACTIC ACID:** extracted from fermented milk, present in the stratum corneum as an important component of NMF (Natural Moisturizing Factor). With its hygroscopic property, the skin is more supple, better hydrated. It's also a skin brightening active ingredient.
- **MANDARIN EXTRACT:** protects elastin fibers and firms. Promotes the brightening of hyperpigmented spots.
- **PLEURIMINCYL:** phyto-complex combining caffeine and Bupleurum Chinensis, facilitates slimming.

PRESENTATION

- Retail: 200ml tube Ref. E269.
- Professional use: 1000g jar Ref. E254.

GLYCOLIC BODY PEELING LOTION

COSMETIC EFFECTS

- Lotion enriched with glycolic acid and lactic acid, helps eliminate dead cells from the stratum corneum. The skin is smoother, silkier. Helps lighten unsightly hyperpigmented spots.

DIRECTIONS FOR USE

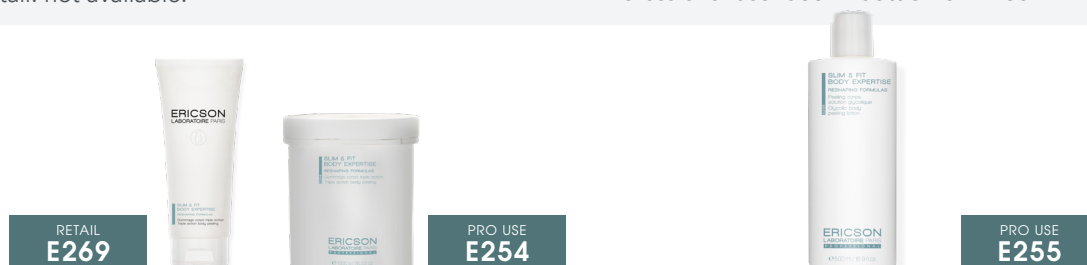
- Pour 30ml of GLYCOLIC BODY PEELING LOTION into a bowl. Apply all over the body using light strokes. Focus on rough areas and pigment spots. Leave on for a few minutes. Refer to professional protocol.
- See precautions for use in the dedicated insert.

COMPOSITION

- **GLYCOLIC ACID:** sugar cane extract. It's the smallest molecule of fruit acid for rapid absorption into the deep layers of the skin. Boosts the synthesis of collagen and elastin fibers. Moisturizing.
- **LACTIC ACID:** extracted from fermented milk, present in the stratum corneum as an important component of NMF (Natural Moisturizing Factor). With its hygroscopic property, the skin is more supple, better hydrated. It's also a skin brightening active ingredient.
- **GRAPEFRUIT EXTRACT:** toning, firming.
- **LIME EXTRACT:** purifying, antiseptic, rich in potassium: ideal for tired, sagging skin, firming effect by stimulating the fibroblasts.

PRESENTATION

- Retail: not available.
- Professional use: 500ml bottle Ref. E255.



ENZYMATIC SMOOTHING BODY CREAM

COSMETIC EFFECTS

- Regenerating cream provides both a gentle exfoliation to accelerate cell renewal and contributes to boost the firmness effect.
- Enriched with a brightening agent, it reduces unsightly pigment spots.

DIRECTIONS FOR USE

- Apply at the end of the treatment or for a gentle massage after the Glycolic solution body peeling.
See professional protocol.

COMPOSITION

- X-PRESSIN: crosslinked papain polymer, allows epidermal exfoliation combined with renewal the basal layer cells. Long-lasting effect.
- SHEA BUTTER: repairing, protective effect.
- WHEAT GERM OIL: rich in essential fatty acids, repairing, regenerating, anti-aging. Rich in anti-free radical vitamin E and vitamin K, protects capillaries.
- MUCIC ACID: extracted from beet pulp. It stimulates cell regeneration. It's also a heavy metal sequestrant and an powerful antioxidant.
- MANDARIN EXTRACT: toning, protects elastin fibers. Promotes brightening of hyperpigmented spots.
- MUCILIANCE: contains mucic acid, extracted from lemon peel pectins. It's a powerful heavy metal chelator and an excellent antioxidant.

PRESENTATION




- Retail: not available.
- Professional use: 500ml jar Ref. E256.



PRO USE
E256

TRIPLE PEELING: PROFESSIONAL TREATMENT PROTOCOL

Cover the plastic sheet E07 with a towel.

<div>1</div> 	<p>FRONT SIDE - EXFOLIATION</p> <p>Perform a full body scrub with TRIPLE ACTION BODY PEELING E254, starting the exfoliation on the legs, then on the stomach, chest and arms. Clean with warm and damp towels. Remove the towel.</p>
<div>2</div> 	<p>BACK SIDE - EXFOLIATION</p> <p>Using the same technique of long strokes, start the scrub on the feet and legs, buttocks, then the back, moving up towards the shoulders. Clean with warm and damp towels.</p>
<div>3</div> 	<p>WRAP</p> <p>Pour 30ml of GLYCOLIC BODY PEELING LOTION E255 into a bowl. Apply to the entire body, back and front side The client may feel tingling sensation. Close the plastic sheet and leave the GLYCOLIC BODY PEELING LOTION E255 for 5 minutes during the 1st session. The exposure time can be increased regularly without exceeding 15 minutes. Open the plastic sheet. Dry the customer's skin with a towel. Apply ENZYMATIC SMOOTHING BODY CREAM E256 all over the body with a gentle massage.</p>

4-TREATMENT SESSION

TREATMENT DURATION:
40 MINUTES

TREATMENT FREQUENCY:
ONCE A WEEK

PEDICARE FOOT TREATMENT

Often neglected foot problems actually represent a real health problem since 8 out of 10 people suffer from foot problems.

Constantly solicited, too often ignored, the feet are put to the test. Although naturally thicker, the skin of the feet is very often sensitive.

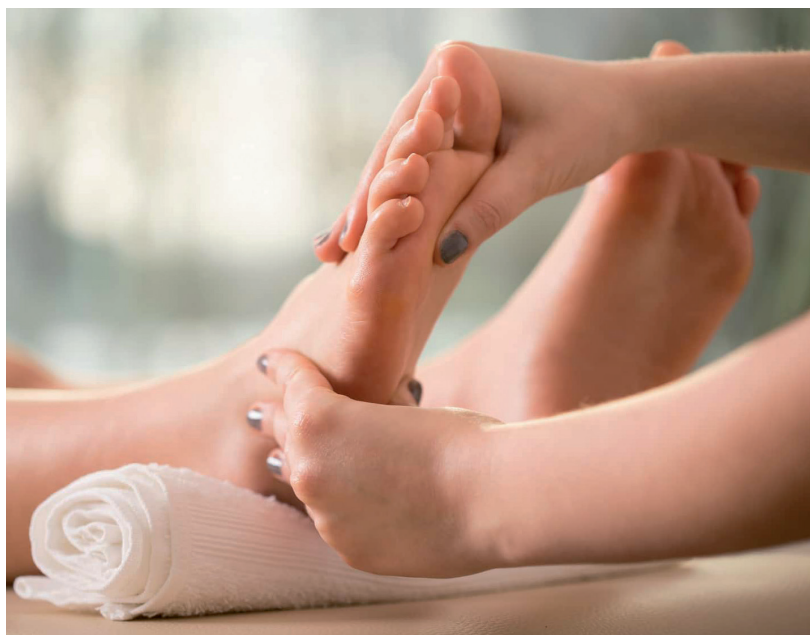
Poorly hydrated, irritated, it can dry out or even deteriorate. The problem is not only unsightly, this dryness may in the long run cause places of pressure, itching and painful irritation.

Sometimes the skin even cracks. Metabolically, damaged skin results from an epidermal imbalance. One of the main causes of this imbalance is a disorder of the desquamation process.

Recent studies have shown that specific proteolytic enzymes are mainly responsible for the complex desquamation process. When this balance is broken, the degeneration of the epidermis is activated; the skin becomes thicker, drier and sometimes irritated.

Our research department has selected PROZYMEX HBT LS 9142, a powerful complex of stabilized enzymes, totally in balance with the skin's pH. Very rich in proteases, it exerts a strong keratolytic action on hardened skin and accelerates cell renewal.

The use of PROZYMEX HBT LS 9142 helps overcome a deficiency of natural enzymes which disrupts exfoliation and induced cell renewal.



The addition of EVOSINA GP GREEN to PEDICARE formulas provides the products with antifungal and antibacterial properties that are fundamental in specific foot care products. Indeed, the pH of the feet skin is naturally higher than the rest of the body and, its balance being fragile, it's important to allow the skin to maintain or restore optimal conditions for its functioning.

EVOSINA GP GREEN is a salt of Usnic acid or usnic acid derived from Icelandic lichen (Genus Usnea or Usnea barbue), known for its antimicrobial and antifungal activity.

This professional treatment offers a keratolytic, softening and purifying action for a complete treatment and an immediate foot relief.

GLYCOLIC PEEL SOLUTION

COSMETIC EFFECTS

- The high concentration of glycolic acid, the acidic pH, the content of keratolytic, anti-fungal and anti-bacterial agents provide the PEDICARE bath with cleaning, balancing and regeneration functions.

DIRECTIONS FOR USE

- For footbath: pour 30 ml into lukewarm water and let the feet soak for 15 minutes.
- Refer to professional protocol.

COMPOSITION

- GLYCOLIC ACID: sugar cane extract. It's the smallest molecule of fruit acid for rapid absorption into the deep layers of the skin. Keratolytic.
- LACTIC ACID: extracted from fermented milk, lactic acid is naturally present in the stratum corneum as an important component of NMF (Natural Moisturizing Factor). Exfoliating, hygroscopic. The skin is suppler, better hydrated.

PRESENTATION

- Retail: not available.
- Professional use: 500ml bottle Ref. E333.

INTENSIVE FOOT REPAIR SCRUB

COSMETIC EFFECTS

- This scrub provides a complete exfoliation thanks to its silica microbeads and creamy texture.
- The skin is supple and smooth again.

DIRECTIONS FOR USE

- Apply to each foot and scrub using circular motions, focusing to rough and damaged areas.
- Refer to professional protocol.

COMPOSITION

- PROZYMEX HBT LS 9142: keratolytic, stimulates cell renewal.
- GLYCOLIC ACID: sugar cane extract. It's the smallest molecule of fruit acid for rapid absorption into the deep layers of the skin. Keratolytic.
- UREA: hydrating, keratolytic.
- RICE POWDER: gentle exfoliant.
- D-PANTHENOL: healing, repairing, moisturizing.

PRESENTATION

- Retail: not available.
- Professional use: 200ml tube Ref. E332.



NUTRI-REGENERATING FOOT CARE

COSMETIC EFFECTS

- This restorative care cream eliminates dead cells through its keratolytic action, rebalances foot hygiene and deeply repairs damaged feet.

DIRECTIONS FOR USE

- Apply to each foot and massage in until completely absorbed, focusing to the heels and damaged areas.
- Refer to professional protocol.

COMPOSITION

- PROZYMEX HBT LS 9142: keratolytic, stimulates cell renewal.
- EVOSINA GP GREEN: antimicrobial, antibacterial.
- GLYCOLIC ACID: sugar cane extract. It's the smallest molecule of fruit acid for rapid absorption into the deep layers of the skin. Keratolytic.
- UREA: hydrating, keratolytic.
- KOKUM BUTTER: ultra-nourishing, repairing.
- SHEA BUTTER: protective action, healing, regenerating properties.
- BEES WAX: protective, nourishing, antibacterial effects.
- VITAMIN E: protective effect regarding all external oxidative agents.

PRESENTATION

- Retail: not available.
- Professional use: 200ml tube Ref. E331.



PRO USE
E331

PEDICARE: PROFESSIONAL FOOT TREATMENT PROTOCOL

1		PREPERATION Pour 30 ml of SOLUTION PEELING GLYCOLIC E333 into the footbath filled with lukewarm water and soak the feet for 15 minutes.
2		PEELING: Apply INTENSIVE FOOT REPAIR SCRUB E332 to the entire foot and lower leg and exfoliate in circular motions, focusing on rough and damaged areas, until the product is removed. Rinse with lukewarm water then dry the foot and lower leg.
3		MASSAGE Apply NUTRI-REGENERATING FOOT CARE E331 to each foot and lower leg. Proceed with a long decongestant massage until the cream is completely absorbed.

4-TREATMENT SESSION

TREATMENT DURATION:
40 MINUTES

TREATMENT FREQUENCY:
ONCE A WEEK

PREMEDIKL BODY CARE TOOLS

BODY LIPO-SCULPTOR

COSMETIC EFFECTS

- Mechanical massage device with 2 rotary axes for use in the palpate-roll massage technique: To deliver a deep massage, stimulate lymphatic circulation, activate cutaneous microcirculation for optimized action on destocking and elimination of cellulite.
- Specially designed to optimize the active ingredients absorption contained in a serum, cream or gel during a professional treatment.

PRESENTATION

- Retail: non available.
- Professional use: Ref. E268.

BODY VACU-MASSAGER

COSMETIC EFFECTS

- Mechanical massage device for reproducing the kneading technique with suction on carefully targeted areas.
- The work of the suction cup helps dislodge fatty deposits, drain clogged areas and relax tension points.
- Apply an oil or rich cream to the cellulite areas and use the BODY VACU-MASSAGER.
- Do not use on legs with poor circulation and/or capillary fragility.

PRESENTATION

- Retail: non available.
- Professional use: Ref. E267.

CRYO-ACTIVE BODY ROLLER

COSMETIC EFFECTS

- Massager with immediate «ice cube» effect. It promotes drainage of the legs and feet, helps lighten heavy legs and relieves feelings of discomfort.
- Before starting the treatment, place the CRYO-ACTIVE BODY ROLLER in the freezer for 15 minutes.
- Massage the leg using light upward movements. Refer to professional protocol.

PRESENTATION

- Retail: non available.
- Professional use: Ref. E339.

HOME CARE PRODUCT LINE: RESHAPING FORMULAS

MULTI-PERFORMANCE BODY OIL

COSMETIC EFFECTS

- Enriched with anti-cellulite, draining, revitalizing and soothing plant extracts, MULTI-PERFORMANCE BODY OIL helps reduce orange peel skin.
- Its light, penetrating texture allows for a draining massage
- Day after day, the tissues are detoxified, unclogged, and orange peel skin is drained.

DIRECTIONS FOR USE

- Pour the oil into the palm of your hand and heat the formula between the palms. Apply to dry or slightly damp skin. Can also be used as a bath oil or mixed with a body cream.

COMPOSITION

- SUNFLOWER OIL: rich in omega 6 and antioxidant vitamin E, strengthens the barrier function and helps preserve skin hydration. Softens and nourishes the skin.
- SEA BUCKTHORN SEED OIL: stimulates skin repair mechanisms.
- COTTON SEED OIL: its high omega-6 content helps rebuild epidermal lipids and reduce water loss. Both regenerating and hydrating.
- BLUEBERRY SEED OIL: rich in omega-3, vitamin E and A, firming, anti-inflammatory and anti-free radical.
- MARULA: toning, prevents the formation of orange peel skin by stimulating collagen.
- AÇAÍ: protects capillaries and eases the drainage. Promotes the elimination of toxins.
- ARNICA: anti-inflammatory. Stimulates blood circulation.
- HORSE CHESTNUT: stimulates venous circulation. Excellent draining effect.
- CRANBERRY: antioxidant and revitalizing.
- MORINGA: detoxifying and facilitates cellular oxygenation.

PRESENTATION

- Retail: 200ml bottle. Ref. E271.
- Professional use: not available.

FIRMING BODY CREAM

COSMETIC EFFECTS

- Ideal firming complex for sagging skin.
- Promotes the restructuring of supporting tissues while providing an immediate toning effect.
- Stimulates epidermal cells, restores intercellular cement.

DIRECTIONS FOR USE

- Massage into the sagging areas. Light and fresh, the skin immediately absorbs this cream without staining or greasing. Apply morning and evening.

COMPOSITION

- FIRMIDERM: combination of Terminalia catappa (tropical almond), black elderberry and tannic acid rich in polyphenols. Tightening, firming effect.
- WHEAT GERM OIL: anti-dehydrating, nourishing, softening.
- MYRRH EXTRACT: stimulates blood circulation.

PRESENTATION

- Retail: 200ml bottle. Ref. E272.
- Professional use: not available.



CONTOURING BODY CREAM

COSMETIC EFFECTS

- Slimming cream, its «Intelligent Targeted Device» or ITD technology improves the impact on adipocyte receptors.
- Specifically developed to reduce the phenomenon of glycation responsible for tissue sagging.
- Deeply regenerated, the skin regains firmness and dynamism.
- Care cream helps lighten pigment spots.

DIRECTIONS FOR USE

- Apply at the end of the professional care in light massage.
- Apply daily to the body, insisting on sagging areas.

COMPOSITION

- X50 SILHOUETTE: ITD double encapsulation system, to ease slimming processes.
- WILD YAM: rich in diosgenin, reproduces the anti-aging effects of DHEA on the skin.
- FIRMIDERM: improves skin elasticity and tone, reduces skin hyper-laxity. Tissue restructuring effect.
- ANTIGLYSKIN: helps limit protein glycation and limits the action of free radicals.
- LUMISKIN: lightening agent by inhibiting calcium flow in melanocytes, which reduces melanin synthesis.
- SESAME OIL: rich in essential fatty acids and antioxidants, promotes skin hydration. Regenerating and softening.

PRESENTATION

- Retail: 200ml tube Ref. E273
- Professional use: 200ml tube Ref. E261.

CRYO-ACTIVE ENERGIZING LEG GEL

COSMETIC EFFECTS

- Care cream to reduce localized cellulite, heavy legs, with swelling, pain sensations, and discomfort.

DIRECTIONS FOR USE

- Apply the gel by moving upwards from the ankles to the thighs using light pressing motions. Repeat this upward movement until complete absorption. Not to be used by pregnant or breast-feeding women.

COMPOSITION

- REMODULIN: phyto-complex derived from the petals of bitter orange, lipolytic and draining. Acts on local micro-circulation.
- SCULPTOSANE: lipolytic, draining, limits the expansion of adipose tissue.
- GUARANA EXTRACT (Paullinia cupana): lipolytic thanks to its caffeine concentration as well as its theobromine, theophylline and xanthine compounds.
- LOTUS: antioxidant and soothing thanks to its high concentration of flavonoids.
- MACADAMIA OIL: regulates the lymphatic and blood system.
- MENTHOL: decongestant, anti-inflammatory.
- CAMPHOR: anti-inflammatory, analgesic.

PRESENTATION

- Retail: 200ml tube Ref. E275.
- Professional use: 200ml tube Ref. E263.



THERMOACTIVE PROFILING BODY GEL

COSMETIC EFFECTS

- Triggers a real slimming process: its heating effect activates the microcirculation and promotes elimination. The synergy of 3 molecules, cafestol, kahweol and xanthines, reduces the volume of adipocytes for a reduction in fat mass.

DIRECTIONS FOR USE

- Preferably apply in the evening. Massage into the entire thigh. A rubefacient effect may normally be felt and redness may appear. Wash hands after use.
- Apply by insisting on the targeted zones. Leave on or complete the application with the body lipo-sculptor for a slimming massage effect.

COMPOSITION

- UNISLIM: Complex of 3 molecules - Cafestol, Kahweol and Xanthines - limits the storage of lipids.
- IVY EXTRACT: draining, restructuring.
- METHYL NICOTINATE: rubefacient substance, vasodilator promoting the diffusion of slimming active ingredients.
- CAFFEINE: promotes fat elimination.
- GREEN TEA EXTRACT: anti-free radical, lipolytic and draining properties.

PRESENTATION

- Retail: 200ml tube Ref. E274.
- Professional use: not available.

THERMO-ACTIVE STARTER SERUM

COSMETIC EFFECTS

- Thanks to its thermo-slimming action, it generates vasodilation of the skin's microcirculation aimed at promoting the passage of lipid content into the circulation and fat elimination.

DIRECTIONS FOR USE

- Apply THERMO-ACTIVE STARTER SERUM on cellulite areas, and a more or less intense heating and reddening effect may appear, depending on skin sensitivity.
- Apply by insisting on the targeted zones. Leave on or complete the application with the body lipo-sculptor for a slimming massage effect. Not to be used by pregnant or breast-feeding women

COMPOSITION

- LIPOCARE: association of bupleurum chinense, caffeine and anti-cellulite coenzyme A, firming, promoting the breakdown of fatty acids.
- GREEN TEA EXTRACT: promotes the elimination of accumulated fat, draining effect.
- IVY EXTRACT: improves skin tone, anti-cellulite, draining.
- METHYL NICOTINATE: rubefacient, vasodilator.

PRESENTATION

- Retail: 200ml bottle Ref. E276.
- Professional use: 500ml bottle Ref. E262.



RETAIL
E274



RETAIL
E276



PRO USE
E262

STRETCH-MARKS MINIMIZING CREAM

COSMETIC EFFECTS

- Action promoting the prevention and reduction of stretch marks. Nourishing, regenerating action on the skin tissue.

DIRECTIONS FOR USE

- Apply the cream in the morning and/or evening as needed.

COMPOSITION

- CENTELLA ASIATICA EXTRACT: healing, anti-inflammatory, protects capillaries.
- ECHINACEA EXTRACT: healing, anti-inflammatory and regenerating properties.
- JOJOBA OIL: moisturizing, nourishing.
- VITAMIN A: soothing, anti-irritant and healing.
- VITAMIN B3: anti-inflammation, regenerating and moisturizing, the skin regains tone and elasticity.
- VITAMIN E: protective effect regarding all external oxidative agents.

PRESENTATION

- Retail: 200ml tube. Ref. E277.
- Professional use: not available

TRIPLE ACTION BODY PEELING

COSMETIC EFFECTS

- Exfoliation combining silica micro-crystals with three fruit acid derivatives: glycolic acid, salicylic acid, and lactic acid, to smooth the skin's micro-relief. Enriched with a lightening agent, this scrub helps reduce unsightly pigment spots.

DIRECTIONS FOR USE

- Exfoliate the whole body with light circular movements. Insist on rough areas and pigment spots.
- Rinse thoroughly with warm water. Refer to professional protocol.
- Home use: apply to dry or damp skin, paying particular attention to elbows, knees, feet and thighs. Rinse with lukewarm water.
- Once or twice a week.

COMPOSITION

- SILICA MICRO-CRYSTALS: dermabrasion promoting cell renewal.
- SALICYLIC ACID: Beta-Hydroxy-Acid extracted from willow bark. Reduces skin aging signs. Keratolytic, anti-inflammatory and anti-bacterial.
- GLYCOLIC ACID: sugar cane extract. It's the smallest molecule of fruit acid for rapid absorption into the deep layers of the skin. Boosts the synthesis of collagen and elastin fibers. Moisturizing.
- LACTIC ACID: extracted from fermented milk, present in the stratum corneum as an important component of NMF (Natural Moisturizing Factor). With its hygroscopic property, the skin is more supple, better hydrated. It's also a skin brightening active ingredient.
- MANDARIN EXTRACT: protects elastin fibers and firms. Promotes the brightening of hyperpigmented spots.
- PLEURIMINCYL: phyto-complex combining caffeine and Bupleurum Chinensis, facilitates slimming process.

PRESENTATION

- Retail: 200ml tube Ref. E269.
- Professional use: 1000g jar Ref. E254.



HOME CARE PRODUCTS: SPECIALIZED FORMULAS

HYDRA-CARE BODY EMULSION

COSMETIC EFFECTS

- Hydrates and softens the body skin. Brings comfort and well-being.
- Recommended for dry, sensitive skin.

DIRECTIONS FOR USE

- Apply every day after showering or bathing.
- Fluid texture quickly absorbed without leaving a greasy film on the skin.

COMPOSITION

- WHEY EXTRACT: moisturizing, restructuring milk proteins.
- GLYCERIN: moisturizing agent.
- LACTIC ACID: extracted from fermented milk, present in the stratum corneum as an important component of NMF (Natural Moisturizing Factor). It's hygroscopic. The skin is suppler, better hydrated.
- VITAMIN A: soothing, anti-irritant and healing.
- JOJOBA OIL: moisturizing and nourishing.
- VITAMIN B3: anti-inflammation, regenerating and moisturizing, the skin regains tone and elasticity.
- VITAMIN E: protective effect regarding all external oxidative agents.

PRESENTATION

- Retail: 200ml tube. Ref. E270.
- Professional use: not available.

VOLUMIZING BUST CREAM

COSMETIC EFFECTS

- For a toned neckline and to redensify the skin décolleté.

DIRECTIONS FOR USE

- Once or twice a day, apply a small amount of cream on the breasts with light massage.
- For optimal results, apply the SCULPTING DÉCOLLETÉ SERUM before the application of the VOLUMIZING BUST CREAM.

COMPOSITION

- VOLUFILIN: promotes the storage of lipids, increases the volume of adipocytes.
- MUSCAT ROSE OIL: rich in essential fatty acids, boosts collagen and elastin synthesis, cell regenerator, anti-aging.
- JASMINE MILK: rich in essential oils with antiseptic, healing, soothing and anti-inflammatory properties.
- MALLOW MILK: rich in mucilages, softening and calming.
- QUICKLIFT: immediate tightening and firming.
- FLORENCE IRIS MILK: softening and moisturizing, astringent and protective properties.

PRESENTATION

- Retail: 200ml tube. Ref. E278.
- Professional use: not available



SCULPTING DÉCOLLETÉ SERUM

COSMETIC EFFECTS

- To firm and strengthen the firmness of the bust, SCULPTING DÉCOLLETÉ SERUM restructures and strengthens the skin tissue by intensifying the collagen and elastin production. It promotes the reduction of stretch marks.

DIRECTIONS FOR USE

- Apply the serum to the entire neckline with gentle massage.
- 1 or 2 times a day.

COMPOSITION

- FLOWER ACIDS: stimulates cell renewal and the synthesis of collagen and glycosaminoglycans.
- DERMOCLORELLA: stimulates the production of collagen and elastin, restructuring. Helps reduce stretch marks.
- HYDROXYPROLISILANE: skin regenerator, activates cell renewal, reduces stretch marks, healing, anti-aging.
- PROTEASYL: strengthens skin elasticity and tone, anti-aging, improves microcirculation.
- QUICKLIFT: immediate tightening, firming effect.

PRESENTATION

- Retail: 30ml bottle. Ref. E279.
- Professional use: not available.

REPAIR & RENEW FOOT CREAM

COSMETIC EFFECTS

- Light cream, intensely nourishes dry, rough skin thanks to its concentration of keratolytic enzymes.
- Promotes accelerated skin renewal.

DIRECTIONS FOR USE

- Apply the cream to each foot and massage until completely absorbed. focusing to the heels and damaged areas.

COMPOSITION

- PROZYMEX HBT LS 9142: keratolytic, stimulates cell renewal.
- EVOSINA GP GREEN: antifungal, antibacterial.
- GLYCOLIC ACID 70%: keratolytic.
- SHEA BUTTER: healing and moisturizing.

PRESENTATION

- Retail: 50ml tube. Ref. E281.
- Professional use: not available.



DAILY CARE HAND CREAM

COSMETIC EFFECTS

- Enriched with mimosa, jojoba and shea butter waxes, DAILY CARE HAND CREAM is specially for dry and very dry hands.
- Highly nutritious, this cream restores the hydrolipidic film and regenerates damaged skin by providing long-lasting comfort. Daily use helps the skin to strengthen its natural protection.

DIRECTIONS FOR USE

- Apply a small amount of cream and massage in until completely absorbed.

COMPOSITION

- MIMOSA EXTRACT: restructuring, anti-inflammatory properties
- JOJOBA EXTRACT: regenerating, protective, source of omega 3 and 6.
- SHEA BUTTER: healing and moisturizing.
- ACEROLA: rich in vitamins A, C and group B, anti-free radical.
- MORINGA EXTRACT: heavy metal chelator, excellent cell protector.
- NASTURTIUM EXTRACT: regenerating effect.
- BUDDLEJA DAVIDII: rich in flavonoids, anti-inflammatory.
- THYME EXTRACT: anti-inflammatory, soothing, healing and antiseptic.
- PHYTOVITYL: energizing active ingredient.
- PHYLDERM: soya extract, rich in essential amino acids and trace elements. Stimulates cell renewal. Regenerating by increasing the production of collagen, elastin and hyaluronic acid.

PRESENTATION

- Retail: 50ml tube. Ref. E282.
- Professional use: not available



RETAIL
E282

ANTI-REGROWTH CONCENTRATE

COSMETIC EFFECTS

- ANTI-REGROWTH SERUM is a post-depilatory treatment that slows down hair growth and reduces the frequency of depilation.
- Its fluid, light texture is quickly absorbed and doesn't leave a sticky effect.

DIRECTIONS FOR USE

- Apply every day for one week after depilation.

COMPOSITION

- ARP100: limits hair regrowth and weakens its texture.
- PILISOFT: limits the endogenous process necessary for hair growth.
- BLOOD ORANGE EXTRACT: detoxifying, antioxidant, activates cell renewal.
- MANDARIN EXTRACT: moisturizing, healing, antioxidant.
- PAPAYA EXTRACT: nourishing, softening, purifying, antiseptic, keratolytic.
- LEMON AND LIME EXTRACT: purifying, astringent, toning, hydrating and regenerating.
- GRAPEFRUIT EXTRACT: softening, exfoliating, revitalizing.
- CENTELLA ASIATICA EXTRACT: soothing, anti-irritant and healing.
- ALLANTOIN: softening, healing.
- UREA: moisturizing agent.

PRESENTATION

- Retail: 100ml tube. Ref. E280.
- Professional use: not available.



NUTRITIONAL SUPPLEMENTS

FAT-BURNING EXPERT PROGRAM

COSMETIC EFFECTS

- The Expert Fat Burner Program is designed as a nutraceutical treatment promoting the elimination of fats. Combining guarana, known to help stimulate the metabolism, lipophilic Neopuntia and a disinfiltrating green tea extract,
- This renewable 15-day programme is an effective, accelerated weight loss aid.

DIRECTIONS FOR USE

- Take 2 tablets per day with a glass of water.

COMPOSITION

- NEOPUNTIA EXTRACT: pure cactus powder, ideal as a slimming product for natural weight management. Patented combination of soluble and insoluble dietary fibres extracted from cactus, by a 100% natural process. Absorbs fat and sugar, aids the excretion of fat.
- OAT EXTRACT: satiety effect, regulates intestinal transit properties.
- GREEN TEA EXTRACT: recognised for its antioxidant, diuretic and lipolytic properties by stimulating thermogenesis.
- GUARANA EXTRACT: helps promote fat burning and weight loss.
- CHERRY STALK: known for its draining effect and its detoxifying properties. Its diuretic, depurative actions help detoxify the body, also helping to combat weight gain.
- BLACKCURRANT: has many diuretic, tonic, draining, anti-inflammatory, anti-stress and antioxidant properties.

PRESENTATION

- Retail: 2 blister packs of 15 tablets Ref. E398.
- Professional use: not available.

RETAIL
E398

DETOX EXPERT CONCENTRATE

COSMETIC EFFECTS

- The Expert Detox Concentrate Programme is a solution with an optimal dosage of phyto-actives selected for their draining, detoxifying properties.
- This nutraceutical formula helps limit water retention, purify the body and promote weight loss without the risk of fatigue. Free from colouring and alcohol.

DIRECTIONS FOR USE

- Take 50ml of EXPERT DETOX CONCENTRATE, pure or diluted in a glass of water.

COMPOSITION

- TAMARIND EXTRACT: promotes digestion by activating the flow of bile to the intestines.
- BURDOCK EXTRACT: promotes the functions of the gallbladder, liver and kidneys. Promotes detoxification of the body.
- DANDELION EXTRACT: helps support the body's elimination functions and helps support drainage and the removal of excess water.
- NETTLE EXTRACT: thanks to its richness in mineral elements, nettle is used for its remineralising functions. Facilitates diuresis.
- BIRCH EXTRACT: has powerful diuretic properties.
- ASPARAGUS EXTRACT: promotes renal elimination of water.
- SPIRULINA EXTRACT: has balancing, energising, toning and revitalising properties. Also strengthens the immune defences.
- NUTRIOSE: obtained from non-GMO corn or wheat, ensures digestive well-being, ensures prebiotic effects.
- SPINACH EXTRACT: rich in vitamin B, fibre, VIT A and C, stabilises blood sugar levels, reduces feelings of hunger, ability to burn fat.
- DRY PARSLEY EXTRACT: diuretic effect, prevents water retention, facilitates digestion.
- DRY ARTICHOKE EXTRACT: promotes biliary and digestive elimination functions as well as renal elimination of water, facilitates weight loss.
- VITAMIN C: helps protect cells against oxidative stress and reduce fatigue.
- CONCENTRATED APPLE JUICE: facilitates digestion, combats oxidative stress.
- BEET PURÉE: rich in vitamin B9, Cu, Fe, Magnesium, Manganese, potassium. Facilitates the elimination of toxins. Very good antioxidant power.

PRESENTATION

- Retail: 500ml bottle Ref. E397.
- Professional use: not available.

RESHAPING FORMULAS AT HOME



E269

E271

E272

E273

E274

E275

E276

E277

E269	TRIPLE ACTION BODY PEELING	200 ml
E271	MULTI-PERFORMANCE BODY OIL	200 ml
E272	FIRMING BODY CREAM	200 ml
E273	CONTOURING BODY CREAM	200 ml
E274	THERMOACTIVE PROFILING BODY GEL	200 ml
E275	CRYO-ACTIVE ENERGIZING LEG GEL	200 ml
E276	THERMO-ACTIVE STARTER SERUM	200 ml
E277	STRETCH-MARKS MINIMIZING CREAM	200 ml

SPECIALIZED FORMULAS AT HOME



E270

E278

E279

E280

E281

E282

E270	HYDRA-CARE BODY EMULSION	200 ml
E278	VOLUMIZING BUST CREAM	200 ml
E279	SCULPTING DÉCOLLETÉ SERUM	30 ml
E280	ANTI-REGROWTH CONCENTRATE	100 ml
E281	REPAIR & RENEW FOOT CREAM	50 ml
E282	DAILY CARE HAND CREAM	50 ml

NUTRITIONNAL COMPLEMENTS

E397	DETOX EXPERT CONCENTRATE	500 ml
E398	FAT-BURNING EXPERT PROGRAM	30 tablets

SLIM & FIT BODY EXPERTISE PROFESSIONNAL USE

OSMO-SLIM

E250	RELAXING WRAP SALTS	500 ml
E251	RESHAPING WRAP SALTS	500 ml
E252	RELAXING BODY OIL	1000 g
E253	RESHAPING BODY OIL	1000 g



E250 E251 E252 E253

CRYO-SLIM

E262	THERMOACTIVE STARTER SERUM	500ml
E263	CRYO-ACTIVE ENERGIZING LEG GEL	200ml
E264	CRYOTHERAPY EFFECT SOLUTION	500ml
E266	LEG REFRESHING RELIEF	200ml



E262 E263 E264 E266

FIRM & SLIM

E257	PRIMING BODY SCRUB	1000 g
E260	SHAPE & FIRM BODY SERUM	200ml
E258	BODY CONTOURING WAX-TO-OIL	450 g
E259	THERMOACTIVE BODY WRAP	2000 g
E261	CONTOURING BODY CREAM	200ml



E257 E260 E258



E259 E261

TRIPLE PEELING

E254	TRIPLE ACTION BODY PEELING	1000 g
E255	GLYCOLIC BODY PEELING LOTION	500ml
E256	ENZYMATIC SMOOTHING BODY CREAM	500gr



E254 E255 E256

PEDICARE

E333	GLYCOLIC PEEL SOLUTION	500ml
E332	INTENSIVE FOOT REPAIR SCRUB	200ml
E331	NUTRI-REGENERATING FOOT CARE	200ml



E333 E332 E331