

TECHNICAL PROTOCOL

PERFECT [GNX] RADIANT YOUTH BOOSTER



With PERFECT [GNX], ERICSON LABORATOIRE offers an innovative anti-aging skin care product targeting the texture and pigmentation irregularities which reveal accelerated skin aging, and promotes a skin firmness and elasticity.

EPIGENETICS: A REVOLUTION IN THE UNDERSTANDING OF SKIN AGING.

THE EXPOSOME CONCEPT

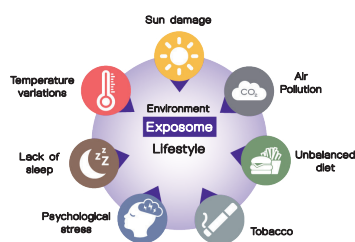
Skin aging is the result of two different biological processes, which may occur simultaneously:

Intrinsic aging:

Also known as chronological or endogenous aging, it is a process of changes in skin structure and function linked to time and to the genetic capital of each individual.

Extrinsic aging:

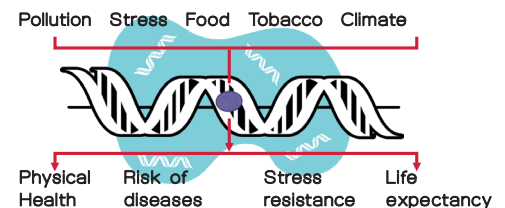
Also referred to as exogenous aging, it is directly linked to our exposome - the combination of our environment and lifestyle - and its impact on the way our body functions



The exposome is responsible for around 75% of skin aging, as it accelerates, amplifies and maintains intrinsic aging mechanisms.

GENETICS AND EPIGENETICS

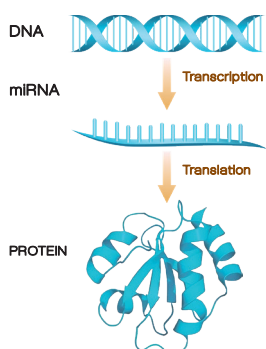
While genetic science study genes, heredity and gene mutations, epigenetics, a very recent science, focuses on the chemical modifications linked to our environment and the regulation gene expression without a change in the DNA sequence.



The identification of these changes, and above all the discovery of molecules capable of acting on these gene regulation mechanisms, opens up new perspectives in the fight against cellular aging. Unlike gene mutations, which permanently affect the DNA sequence, epigenetic modifications are reversible.

Genes tell each cell its role in the organism. At their command, cells synthesize proteins: this is the translation of the genetic code.

Every day, we produce tens of thousands of proteins. Each has a different role to play in our organism: transporting oxygen in the blood, regulating insulin, ensuring muscle contractions, transporting molecules, cell signalling and structuring cells, tissues and organs...



Protein biosynthesis is a process in which the genetic code is read and proteins are produced through three stages:

1. First, DNA is transcribed or converted into RNA (ribonucleic acid). RNA resembles DNA, but can be transported outside the nucleus where it can be used to make proteins.
2. Once out of the nucleus, the information encoded or translated by the RNA molecule can produce a protein from specific amino acids.
3. The protein can then carry out its biological function, either on its own, or by binding to and working with other proteins.

For a gene to lead to protein synthesis, it must be "readable". Epigenetic modifications resulting from the negative impact of our environment and lifestyle can impair this essential "readability" and accelerate physiological aging.

The epigenetic modifications linked to the exposome are mainly:

1. DNA methylation:

It corresponds to the addition of a methyl group to the cytosines present on the DNA, which inhibits gene transcription.

2. Histone modifications:

Histones are proteins that regulate the accessibility of DNA. The DNA molecule wraps around histones to form a fiber: chromatin. Histones act as locks, enabling chromatin opening and DNA translation.

3. MicroRNA Expression:

MicroRNAs, or miRNAs, play a key role in skin aging, controlling both the composition of the Extra-cellular Matrix (ECM) and the behavior of its resident cells:

- targeting messenger RNAs in the ECM
- modulating the expression of genes involved in matrix synthesis or degradation

Today, we know that genes can be "switched on" or "switched off" by several types of bio-chemical modifications or "epigenetic marks" that promote or inhibit their expression.

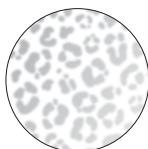
While cutaneous aging is inevitable, and that its process is unstoppable, it is however possible to significantly slow down its visible effects on the skin by addressing the aging factors linked to our exposome.

This is precisely the objective set by ERICSON LABORATOIRE with the PERFECT [GNX] range.

THE PERFECT [GNX] ANSWER

Target the epigenetic aging process to limit the impact of environmental and lifestyle factors that accelerate the signs of aging and allow the skin to regain its youthfulness.

1. Uneven pigmentation and lack of luminosity



2. Photo-induced texture irregularities



3. Loss of elasticity and bounce



PERFECT [GNX] CONCEPT UNIQUENESS

- An innovative approach enabling an action on various epigenetic aging markers, and therefore on the reversible aspects of the signs of aging.
- A global efficacy on the consequences of accelerated aging that negatively impact perceived age.
- A high-performance bio-mimetic technology combining a Biological phyto-modulator, a Melanocyte bio-regulator and an Oligo-peptide complex for visibly unified, smoothed, toned and plumped skin.

Recommendations

PERFECT [GNX] is designed for women of all ages showing signs of premature aging that affect the evenness and quality of their skin.

This range is particularly well-suited to correcting the distinctive signs of photoaging: pigmentation irregularities, dull complexion, and weakened skin structure.

The different cream textures enable the definition of routines that are perfectly adapted to the needs of each skin type.

Multi-therapy associations

- For anti-aging prevention, in combination with ESSENTIALS skin care ranges.
- As part of an anti-dark spot treatment in association with radiance-boosting treatments such as VITAMIN ENERGY or NOVAPEEL [AHA], or after an ACTI-BIOTIC treatment to correct hyper-pigmented marks.
- At the start of an AGE-EXPERTISE treatment to boost the skin's youth mechanisms and optimize the effectiveness of a more targeted anti-aging treatment.

THE TECHNOLOGY

PERFECT [GNX] is inspired by the latest discoveries in epigenetics: it is designed to correct the signs of exogenous aging, integrating a novel “youth regulation” technology at the heart of the skin. By facilitating or repressing the biological functions impacted by alterations to the epigenome, PERFECT [GNX] helps to turn back the “cellular clock”.

BOOSTS THE SKIN'S OPTICAL AND MECHANICAL PARAMETERS	LIMITS THE MELANOGENESIS PROCESS	STIMULATES SKIN'S STRUCTURAL COMPONENTS REGENERATION
<ul style="list-style-type: none">Restores skin radiancePromotes skin elasticitySmoothes fine lines and wrinkles	<ul style="list-style-type: none">Minimizes pigmentation irregularitiesPrevents the appearance of dark spotsImproves complexion clarity & brightness	<ul style="list-style-type: none">Strengthens skin cohesionPreserves dermal densityEnsures epidermal resistance

THE ACTIVE PRINCIPLES

1. BIOLOGICAL PHYTO-MODULATOR

This patented active ingredient energizes the cellular epigenome. It has been clinically tested for its ability to regulate premature aging processes, and in vivo tests have demonstrated its efficacy on the skin's biomechanical properties, improving cutaneous relief and radiance.

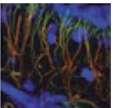
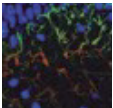

ORIGIN

It is an active fraction particularly rich in oligosaccharides, extracted from calendula flowers.

BENEFITS

- Promotes the synthesis of pro-collagen I, a major Extracellular Matrix (ECM) protein
- Protects the ECM from degradation
- Stimulates the synthesis of matrix proteins ensuring skin elasticity
- Significantly improves the appearance of cutaneous parameters affecting perceived age

ANTI-AGING EFFICACY

CLINICAL IN VITRO TESTS	CLINICAL IN VIVO TESTS														
<p>The Biological phyto-modulator acts on various epigenetic markers responsible for epigenome dysregulations:</p> <p>Supports chromatin activity by protecting histones:</p> <p>Limits methylation of histone 3 H3K39 lysine-9 *:</p> <p>-54%</p> <p>Inhibits phosphorylation of histone H2AX **:</p> <p>-82%</p> <p>Regulatory action on miRNA expression *:</p> <p>Promotes the expression of matrix “repair” genes by modulating two miRNAs</p> <p>Restores MiRNA expression enabling inhibition of MMP1 or collagenase 1</p> <p>Protects and supports the organization of elastin and fibrillin 1 fibers ***:</p> <div></div> <p>Control Untreated irradiated explants Treated irradiated explants</p>	<table><tr><th>PARAMETERS</th><th>IMPROVEMENT</th></tr><tr><td>Elasticity</td><td>+ 11.8%</td></tr><tr><td>Tonicity</td><td>+ 12.5%</td></tr><tr><td>Skin surface smoothness</td><td>- 22.6%</td></tr><tr><td>Luminosity</td><td>+ 10.7%</td></tr><tr><td>Transparency</td><td>+ 12.3%</td></tr><tr><td>Healthy glow</td><td>+ 11.5%</td></tr></table> <p>Tests on 20 volunteers following twice-daily application of a formula containing 3% biological phyto-modulator for 42 days.</p> <p>*In vitro test on fibroblasts exposed to repeated 15-minute solar irradiation, then treated with a solution containing 0.5% Biological phyto-modulator for 6 days.</p> <p>**In vitro test on human skin explants exposed to repeated 30-minute solar irradiation, then treated topically with a solution containing 1% Biological phyto-modulator for 5 days.</p> <p>***In vitro tests on human skin explants exposed to repeated 30-minute solar irradiation, then treated topically with a solution containing 1% Biological phyto-modulator for 4 days.</p>	PARAMETERS	IMPROVEMENT	Elasticity	+ 11.8%	Tonicity	+ 12.5%	Skin surface smoothness	- 22.6%	Luminosity	+ 10.7%	Transparency	+ 12.3%	Healthy glow	+ 11.5%
PARAMETERS	IMPROVEMENT														
Elasticity	+ 11.8%														
Tonicity	+ 12.5%														
Skin surface smoothness	- 22.6%														
Luminosity	+ 10.7%														
Transparency	+ 12.3%														
Healthy glow	+ 11.5%														

2. MELANOCYTE BIO-REGULATOR

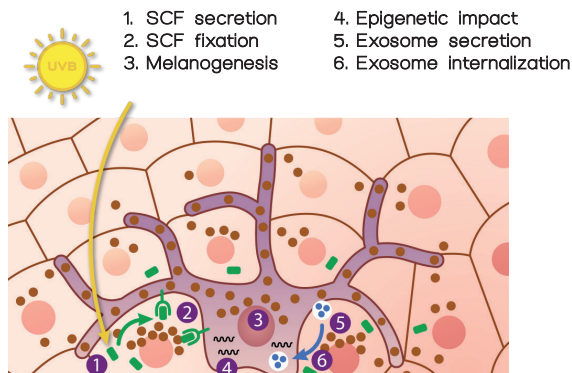
This active ingredient was selected for its ability to modulate the various mechanisms regulating melanogenesis: initiation stage, melanosome transport and transfer to keratinocytes.

ORIGIN

It is derived from the active oligosaccharide fraction of the *Palmaria Palmata* red algae and is particularly rich in xylans and galactans.

BIOLOGICAL FUNCTIONING

1. Inhibits the expression of two target genes involved in melanosome synthesis and transport by restoring the melanocytic epigenome further to photo-induced modifications.
2. Limits the demand for melanin synthesis emitted by exposed keratinocytes to melanocytes: regulates this communication process managed by exosomes, small transporters of biological messages between two cells.
3. Reduces keratinocytes SCF (Stem Cell Factor) production by repressing SCF signaling, a melanocyte-activating messenger.



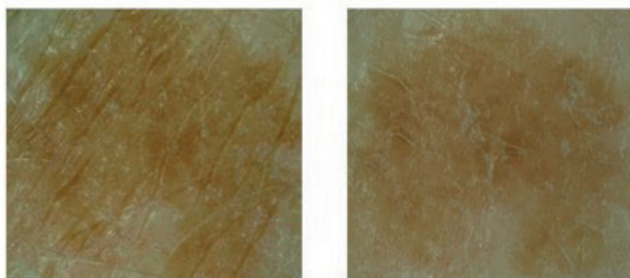
BENEFITS

Controls photo-induced pigmentation for a more even, luminous complexion and visible reduction in pigmentation spots.

EFFICACY ON DARK SPOTS AND LUMINOSITY.

CLINICAL TESTS

Intensity and surface reduction of pigmentation spots observed in **76%** and **55%** of Caucasian subjects respectively.



Test on a Caucasian panel of 25 subjects following 56 days of twice-daily application of a formula containing 4% Melanocyte bio-regulator

Significant skin lightening of the entire face observed in **68%** of Asian subjects.

Test on an Asian panel of 27 subjects following 56 days of twice-daily application of a formula containing 4% Melanocyte bio-regulator

SELF-EVALUATION TEST

PARAMETERS	% of subjects confirming an improvement	
	after 28 D	after 56 D
More luminous complexion	65%	76%
Recovered healthy glow	71%	74%
Lighter looking skin	65%	76%
Improved uniformity	71%	74%
Less visible brown spots	53%	71%

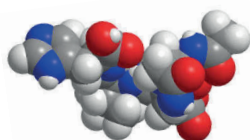
Test on 34 volunteers following twice-daily application of a formula containing 3% Melanocyte bio-regulator for 56 days, with an initial questionnaire at 28 days.

3. OLIGO-PEPTIDE COMPLEX

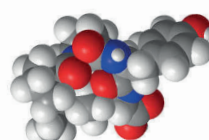
This complex is a synergistic combination of two highly bio-available tetrapeptides - Acetyl Tetrapeptide-9 and Acetyl Tetrapeptide-11 - offering visible overall youthfulness as early as 21 days.

ACTION

It acts on all 3 skin layers - epidermis, dermis and dermo-epidermal junction (DEJ) - to stimulate the synthesis of proteoglycans and collagens essential to skin cohesion.



Acetyl Tetrapeptide-9 mimics the function of Lumican's matrikine by stimulating fibroblasts to synthesize collagen fibrils.



Acetyl Tetrapeptide-11 acts on epidermal components responsible for epidermal/DEJ cohesion: Syndecan I and Collagen XVII.

BENEFITS

Compensates for the loss of density and firmness intensified by premature aging.

EFFICACY

CLINICAL TESTS - IN VITRO*

- +115%** Lumican level in the fibroblasts
- +112%** Collagen I level in the fibroblasts
- +130%** Syndecan-1 level in the keratinocytes
- +185%** Collagen XVII level in the keratinocytes

CLINICAL TESTS - IN VIVO**

- +21%** firmness as of 21 days

* Test on human fibroblasts incubated for 3, 6, or 9 days in a solution enriched either in Acetyl Tetrapeptide-9 or 11.

** Test on a panel of 32 subjects following 21 days of twice-daily application of a formula containing 2% oligo-peptide complex.

THE PERFECT [GNX] RANGE

BRIGHTENING AGE DELAY SERUM

BENEFITS & RECOMMENDATIONS

ACTIVE INGREDIENTS



HOME USE
30 ml pump bottle -
Ref. E1162

PROFESSIONAL USE
4 x 2.5 ml ampoule -
Ref. E1158
in the 4 sessions kit -
Ref. E1157

This anti-aging serum restores the skin's radiance and luminosity, while minimizing dark spots and discolorations day after day. Its silky formula smoothens and tones the skin from the very first application, thanks to its immediate tightening effect.

All skin types.

- Biological phyto-modulator: global anti-aging & radiance boost
- Melanocyte bio-regulator: unifying & dark spot minimizing
- Oligo-peptide complex: firming and densifying
- White lily and edelweiss extracts: unifying and anti-oxidant
- Tensing bio-polymer

BRIGHT-REVIVE LIGHT CREAM

BENEFITS & RECOMMENDATIONS

ACTIVE INGREDIENTS



HOME USE
50 ml jar -
Ref. E1165

PROFESSIONAL USE
4 x 2 ml sachet -
Ref. E1159
in the 4 sessions kit -
Ref. E1157

This lightweight anti-aging cream helps boost radiance and visibly minimize the signs of premature aging. Day after day, the skin looks plumper, and the complexion appears more even and luminous.

Normal to combination skin.

- Biological phyto-modulator: global anti-aging & radiance boost
- Melanocyte bio-regulator: unifying & dark spot minimizing
- Oligo-peptide complex: firming and densifying
- Prickly pear extract: anti-oxidant & regenerating
- Damas rose floral water: toning & anti-oxidant

BRIGHT-RECHARGE COMFORT CREAM

BENEFITS & RECOMMENDATIONS

ACTIVE INGREDIENTS



HOME USE
50 ml jar -
Ref. E1163

PROFESSIONAL USE
Not available

This silky-soft smoothing and radiance reviving cream leaves the skin feeling soft and youthfully bouncy. Day after day, the skin texture looks more refined and even-toned.

Normal to dry skin.

- Biological phyto-modulator: global anti-aging & radiance boost
- Melanocyte bio-regulator: unifying & dark spot minimizing
- Oligo-peptide complex: firming and densifying
- Centella Asiatica extract: repairing & anti-aging
- Propolis: regenerating & protecting

BRIGHT-RESTORE NUTRI CREAM

BENEFITS & RECOMMENDATIONS

ACTIVE INGREDIENTS



HOME USE
50 ml jar -
Ref. E1164

PROFESSIONAL USE
50 ml jar -
Ref. E1160
in the 4 sessions kit -
Ref. E1157

This replenishing rich cream provides immediate comfort and suppleness. Day after day, the skin appears more luminous, even-toned and visibly firmer.

Dry skin. Also recommended as a night cream.

- Biological phyto-modulator: global anti-aging & radiance boost
- Melanocyte bio-regulator: unifying & dark spot minimizing
- Oligo-peptide complex: firming and densifying
- Linseed extract: regenerating & protecting
- Ashwagandha extract: anti-aging and anti-oxidant

SMOOTHING UNIFYING MASK

BENEFITS & RECOMMENDATIONS

ACTIVE INGREDIENTS



HOME USE
50 ml brush tube -
Ref. E1166

PROFESSIONAL USE
Not available

This perfecting and luminosity boosting mask is incredibly easy to apply thanks to its built-in brush. In just a few minutes, it reveals a visibly smoothed and refined skin texture, and a beautiful youthful glow.

- Biological phyto-modulator: global anti-aging & radiance boost
- Melanocyte bio-regulator: unifying & dark spot minimizing
- Oligo-peptide complex: firming and densifying
- Kaolin: purifying & soothing
- Ganoderma Lucidum extract: anti-aging & detoxifying
- Aloe Vera: hydrating & revitalizing

BIOCELL YOUTH MASK

BENEFITS & RECOMMENDATIONS

ACTIVE INGREDIENTS



HOME USE
Not available

PROFESSIONAL USE
4 x 15 ml sachet -
Ref. E1161
in the 4 sessions kit -
Ref. E1157

This professional face and neck mask is made from biocellulose obtained by natural fermentation. Its «second-skin» texture offers comfort and freshness. Its formula reinforces the smoothing and plumping effects of the preliminary massage.

- Beech bud extract: regenerating & revitalizing
- Seaweed complex: plumping & protecting
- Lactic acid: radiance boosting & exfoliating
- Glycerin: moisturizing & softening

THE PROFESSIONAL TOOL: THE FACE STIMULATING SCULPTOR

Designed as an innovative, contemporary reinterpretation of the traditional Asian gua-sha, this massage tool boosts radiance and skin microcirculation.

- Non-allergenic, medical-grade stainless steel
- Innovative, highly ergonomic shape to perfectly match the different facial contours and volumes
- Easy grip for fluid massage gestures

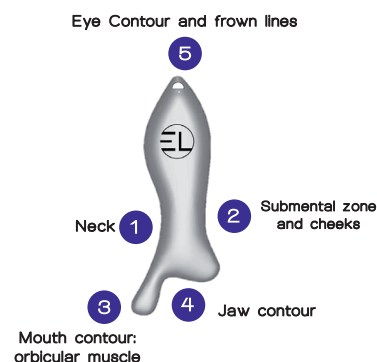


BENEFITS

- Relaxes facial muscles
- Effectively drains and decongests the face
- Promotes skin reoxygenation and improved toxin elimination
- Optimizes the absorption of active ingredients

USAGE

- The FACE STIMULATING SCULPTOR is designed to enable a massage perfectly adapted to the different areas of the face and neck.
- The massage steps involve the usage of the different sides of the tool.
- Each maneuver needs to be repeated 3 times, to ensure proper stimulation of all areas of the face and neck.
- Gestures should be rhythmic and regular, adjusting pressure according to the facial zone.
- The massage steps are detailed in the professional protocol video and available as an illustrated document accessible via the QR code in this brochure.



PERFECT [GNX] PROFESSIONAL PROTOCOL

This comprehensive anti-aging treatment is designed to smooth, firm and visibly boost skin luminosity and radiance. It combines an energizing massage with a sculpting facial stimulation performed with an innovative ergonomic massage tool to smooth and boost micro-circulation. Expert formulas help combat dullness and uneven skin tone, while visibly plumping and toning the skin.



1		MAKEUP REMOVAL – CLEANSING According to the skin's needs, select the recommended cleansing milk or the SEBO-SAVON E151. Rinse with water. Follow with the recommended lotion.	8 min.
2		EXFOLIATION Preferably use CLINICAL PEELING E146. In case of sensitive skin use PERFECT SURFACER E144 or DERMA GUM E145. Apply the lotion after removal.	10 min.
3		APPLICATION SERUM Apply the BRIGHTENING AGE-DELAY SERUM E1158 on the face and neck insisting on dark spots and pigmented areas with a circular massage.	4 min.
4		MESSAGE Apply the BRIGHT-RESTORE NUTRI-CREAM E1160 onto the face and neck. Proceed to a manual revitalizing massage.	15 min.
5		PREMEDIKL TOOL Relax the muscular fibers and re-oxygenate the skin with the PREMEDIKL FACE STIMULATING SCULPTOR E682 following the different massage steps. Proceed with rhythmic, regular strokes and adjust the pressure according to the zones of the face.	15 min.
6		BIOCELLULOSE MASK Apply the "neck" section of the BIOCELL YOUTH MASK E1161 after removing the white gauze. Peel off the blue film. Follow with the "face" part of the mask. Smoothe with a spatula. Place 2 cotton pads soaked in PHYTO-CALMING LOTION EYE ZONE E1064 on the eyelids. Gently remove the mask after 15 minutes and massage the serum into the skin.	20 min.
7		LIGHT MESSAGE Apply the BRIGHT-REVIVE LIGHT CREAM E1159 on the face and neck.	3 min.

4-SESSION
TREATMENT

SESSION LENGTH
75 MINUTES

SESSION FREQUENCY
ONCE A WEEK



LABORATOIRE ERICSON
92800 Puteaux

www.ericsonlaboratoire-paris.com