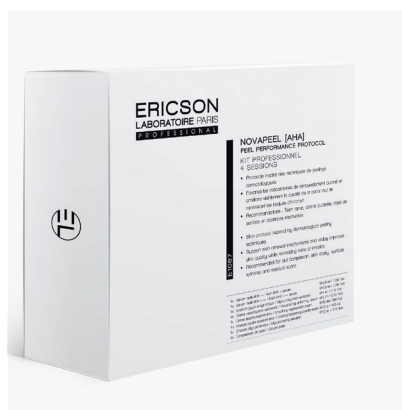


TECHNICAL FILE

NOVAPEEL [AHA]

PEEL PERFORMANCE PROTOCOL



NOVAPEEL [AHA]

PEEL PERFORMANCE PROTOCOL

CONTEXT

Peelings are the perfect illustration of the ever closer link between cosmetology and dermatology/ aesthetic medicine. They are increasingly in demand in beauty salons, thanks to the growing public awareness promoted by the press and social networks presenting them as a must-have corrective multi-benefit treatment with no risk of eviction: the demand growth expectations for this type of procedure is forecasted to be +50% over next five years (Statista survey). The recent introduction of new chemical exfoliators and/or acid combination offering utmost exfoliating efficacy with less risk of irritations has allowed ERICSON LABORATOIRE to develop a salon protocol offering instant results similar to those of a light medical peel.

CONCEPT

The NOVAPEEL [AHA] range offers innovative skin renewal and peeling solutions for all skin types. It incorporates a synergistic resurfacing combination of chemical exfoliants - controlled release AHAs, AKAs and PHAs - enzymes and skin barrier repair ingredients for smooth, even and luminous skin.

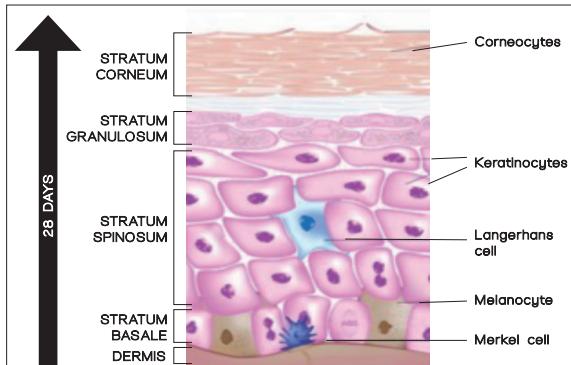
LAUNCH OBJECTIVES

- Assert our expert cosmeceutical approach with a unique and innovative peeling technology.
- Introduce a new multi-benefit professional peeling protocol designed to suit all skin types. This is made possible by the introduction of new-generation formulas offering the ideal balance between high peeling efficacy and high tolerance for optimal skin resurfacing results.
- Offer a protocol that can facilitate the sales of a personalized multi-therapy program due to its instant spectacular results and numerous association possibilities with other specific or anti-aging treatment.



SKIN PHYSIOLOGY

The epidermis is the skin's external structure. It goes through a constant cell renewal process which ensures its protective function.



The cell renewal mechanism:

This natural exfoliation process enables the epidermis to regenerate itself and to shed the dead skin cells that alter skin quality.

With age, this process, which lasts 28 days in young skin, slows down, which:

- Impacts the epidermal regeneration process
- Induces surface accumulation of dead cells, which leads to a lack of radiance and an uneven texture.

The epidermal **renewal** is a balance between the **loss of dead surface cells**, the corneocytes, and the **generation of new epidermal cells** or keratinocytes.

The desquamation of cells on the skin's surface must naturally be compensated by the renewal of keratinocytes within the germinal basal layer (stratum basale) of the epidermis. These new cells will divide to create new cells before differentiating as they migrate to the skin surface.

The final differentiation of the epidermis leads to the **formation of the stratum corneum**, or horny layer, which acts as the **skin's barrier**.

The desquamation process is a **progressive breakdown of intercellular junctions** between stratum corneum keratinocytes, or **corneocytes**.

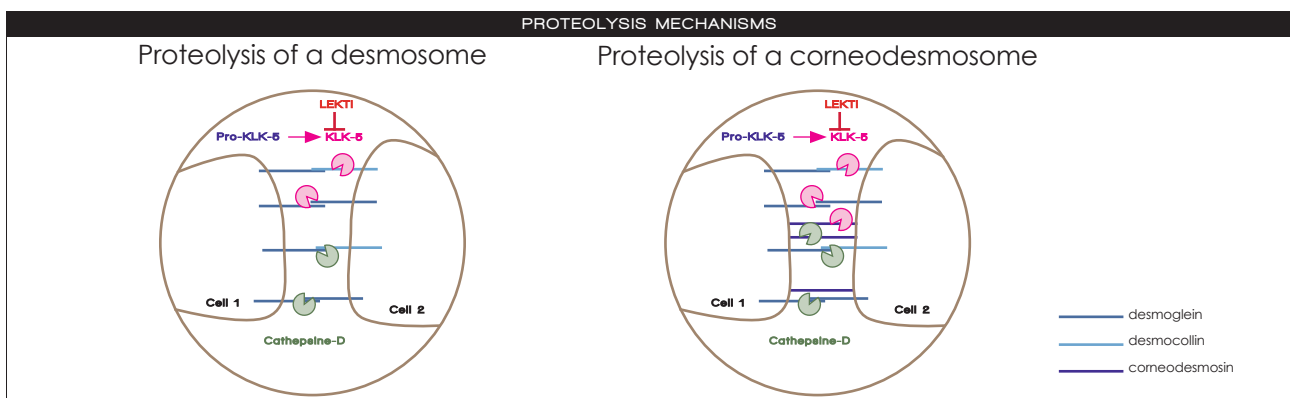
The corneocytes that form the stratum corneum are attached to each other by mechanical junctions known as **desmosomes**. The intercellular spaces are filled with a hydrophobic lipidic substance acting as cement and organized in multilayers, which seals the stratum corneum.

As mentioned above, the **desquamation process is biologically programmed** and intrinsically regulated in **young healthy skin** to ensure a cell renewal cycle of 28 days. The **progressive degradation of intercellular junctions** takes place under the influence of protein-degrading enzymes known as **proteases**.

It relies on the action of proteases such as kallikrein-5 and cathepsin-D.

Capable of self-activation, **these enzymes degrade the constituent molecules of desmosomes and corneodesmosomes**, inducing a loss of cohesion between epidermal cells and thus enabling their elimination.

Once activated, kallikrein-5 is finely regulated by endogenous protein inhibitors such as LEKTI (Lympho-epithelial Kazal-type-5 inhibitor).



The activity of these proteases not only supports the desquamation process but is also important for maintaining the water content of the stratum corneum ensuring its **water sealing function**.

The desquamation process is therefore crucial for preserving the barrier function of the epidermis.

An assisted exfoliation can compensate for this cellular slowdown and reduce the accumulation of corneocytes on the skin's surface, restoring its vitality and radiance.

THE DIFFERENT TYPES OF PEELINGS

1. CHEMICAL PEELS

The chemical peeling process involves the application of an acid solution to accelerate cell renewal and reveal a "new skin". The acids used are hydroxy acids which come under different forms such as AHAs, BHAs, PHAs or AKAs.

The main purpose of hydroxy acids used in dermatology or cosmetics is to promote skin desquamation: By lowering the pH of the skin surface, they essentially weaken the cohesive forces between horny cells. This increases desquamation, on which cell renewal depends, and to some extent, the restoration of moisture regulation.

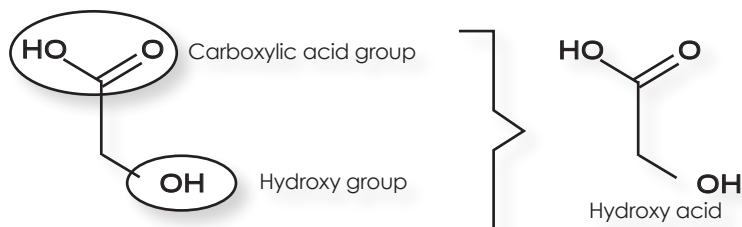
If the stratum corneum is clogged with dead cells, it no longer ensures its protective function protection: hydroxy acids, by clearing away the dead cells, enable a new layer of bonded cells to act as an efficient barrier against aggressions.

Hydroxy acids also have moisturizing and regenerating benefits:

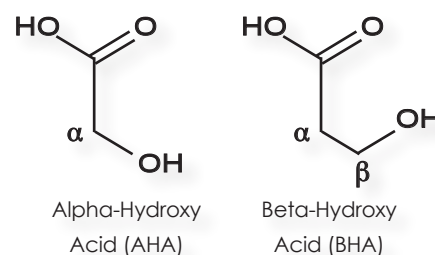
They transform epidermal keratin into amino acids, essential for hydration and suppleness and increase the synthesis of glycosaminoglycans (which have a high affinity for water). This boosts the skin's water retention capacity of the dermis, which also promotes skin suppleness.

This exfoliating effect is also accompanied by stimulation of collagen and elastin synthesis, enabling the skin to maintain or regain its tone and elasticity.

Looking at the chemistry, hydroxy acids are molecules characterized by a carboxylic acid group and a hydroxy group. These are common groups used in chemistry and can be found on many different compounds. To give you an idea: in vinegar, used in our cooking, there is acetic acid which also has a carboxylic acid group. When you have both a carboxylic acid and a hydroxy group in one compound, you get a hydroxy acid.



The type of hydroxy acid depends on the position of the hydroxy group. For example, the difference between an AHA or a BHA is that the position on the carbon is next to the carboxylic acid group for AHAs, and one position further away from the carboxylic acid group for BHAs.



THE DIFFERENT TYPES OF HYDROXY ACIDS

• Alpha Hydroxy Acids or AHAs:

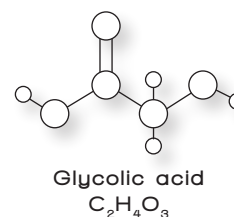
The low molecular weight of AHAs enables them to penetrate deep into the skin.

Highly versatile, hydroxy acids are exceptional cosmeceutical active ingredient with a very wide range of skin benefits:

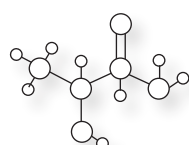
- Restore radiance
- Refine skin texture
- Minimize the effects of photo-aging
- Reduce scarring
- Even out pigmentation
- Smoothen the skin's surface and minimize fine lines
- Support hydration

Their stimulating action on cell renewal also promotes dermal protein synthesis, giving them long-term anti-aging properties.

Glycolic acid is the most **widely used type of AHAs** used in dermatological or cosmeceutical peeling. It has the lower molecular weight of all AHAs which enables it to penetrate rapidly and deeply into the skin. Beyond its excellent exfoliating properties, glycolic acid significantly increases skin hydration. It helps produce substances like proteoglycans, which help keep skin better hydrated by increasing its natural hyaluronic acid content, making it more resistant. It also stimulates the synthesis of glycosaminoglycans and collagen fibers for an anti-aging action.



In peeling formulas, glycolic acid is often combined with **other AHAs**, such as **lactic acid, citric acid, malic acid, mandelic acid and tartaric acid**. The combination of a variety of AHAs with different molecular weights and chemical structures helps modulate the exfoliating action of glycolic acid and achieve complementary skin benefits on pigment irregularities, pH balance, hydration and inflammation.



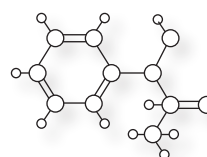
Lactic acid



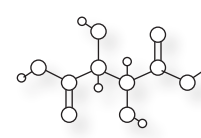
Malic acid



Citric acid



Mandelic acid



Tartric acid

The concentrations of AHAs in cosmetics is subject to a strict regulation in Europe.

The regulatory limits, which stipulate that the % of all AHAs in a formula should not exceed 10% for non-professional use and 30% for professional use. The pH of the formulas also need to meet the following norms: 4 is the lowest authorized for home use products and 3 the lowest authorized for professional cosmetic used.

- **Beta Hydroxy Acids or BHAs**

Unlike the hydrophilic AHAs, they are **liposoluble** and therefore recommended for oily skin. The most commonly used is **salicylic acid**.

- **Poly Hydroxy Acids or PHAs**

More recently introduced in cosmetics, they penetrate less deeply into the skin due to their larger molecular structure. They stay longer in the stratum corneum than smaller types of hydroxy acid molecules which are rapidly absorbed deeper into the skin. They are milder than AHAs and BHAs and better tolerated namely by sensitive skin types.

PHAs include Lactobionic acid, Gluconic Acid, and Galactose. They have moisturizing, antioxidant and soothing properties which contribute to strengthen the skin barrier function. They also help **minimize dark marks caused by post-inflammatory hyperpigmentation**.

This makes them the **ideal exfoliating option for daily skin care formulas**, even for delicate skins.

- **Alpha Keto Acids or AKAs**

These are **the latest generation of hydroxy acids**. AKAs are characterized by the presence of three carbon atoms and a small molecular size which gives them high absorption profile. The most interesting AKA type used in cosmetics type is Pyruvic acid.

Its small structure allows it penetrate down to the upper papillary dermis to stimulate increased production of collagen, elastic fibers and glycoproteins to a greater extent than other hydroxy acids. This explains **its skin remodeling properties and excellent efficacy on signs of photo-aging** such as fine lines and uneven pigmentation.

Pyruvic acid is also less hydrophilic than Alpha Hydroxy Acids and presents a more evident lipophily: this means it can easily penetrate into sebaceous glands, where it has showed a sebostatic and anti-microbial activity.

2. ENZYMATIC PEELS

Enzymatic exfoliants or proteases have the ability to weaken the chemical bonds that bind corneocytes together by "digesting" keratin proteins. They are usually naturally-derived from fruits such as papaya or pineapple.

Their role in cosmetics is to compensate for the deficient activity of the skin's natural proteases by stimulating the normally biologically-programmed shedding of dead corneocytes.

They are well tolerated by all skin types including sensitive ones, but have the disadvantage of being rather unstable, which can compromise their effectiveness. It is therefore more interesting to formulate with stabilized forms versus free forms. There are various stabilization methods including physical entrapment or encapsulation, and chemical cross-linking. The latter is a more recent technology and one of the most efficient stabilization methods.

Beyond their cell renewal boosting benefits, **enzymes offer anti-aging benefits and help regain a brighter, more luminous and even complexion. Their action is gentler but longer-lasting than that of AHAs.**

3. MECHANICAL PEELS

The mechanical or physical exfoliating action results from the **rubbing of more or less abrasive particles on the surface of the epidermis.**

The best type of physical exfoliants will have **finer beads or granules**, that will gently slough away the dead skin cells, but will **not be overly abrasive on the skin or induce micro-cuts.**

Unlike chemical peels or enzymes peel, its **action is restricted to the stratum corneum** and it therefore will not offer benefits such as moisturizing – it is actually more of a skin barrier disrupter, which is why it should not be used daily – and will not help with pigmentation irregularities as these are initiated lower in the epidermis. A mechanical exfoliation will however stimulate circulation and blood flow promoting a healthy and rosy glowing skin.

As they immediately eliminate dead cells, **mechanical peels facilitate the cutaneous absorption of hydroxy acids or enzymes applied simultaneously or afterwards. They are therefore very complementary to chemical or enzymatic peels, especially at the beginning of a professional peeling treatment.**



NOVAPEEL [AHA]: THE RANGE UNIQUENESS

A breakthrough association of innovative exfoliating, perfecting and repairing active ingredients for a spectacular skin transformation effect.

1. Instant
high-tolerance
exfoliation



2. Lasting cell
renewal
stimulation



3. Complexion
homogenization



4. Soothing &
moisturizing
actions



NOVAPEEL [AHA] is a range of expert peeling treatments for a rapid, visible and long-lasting "new skin" effect which can be used even on skin types prone to sensitivity:

- **Dual chemical exfoliating technology** combining an instant effect with a slow-release efficacy
- **Perfecting action on all skin parameters: texture, quality and color**
- **Respect of the cutaneous barrier** and compatibility with **all skin types**

THE NOVAPEEL [AHA] TECHNOLOGY

Innovative peeling formulas offering a visible resurfacing effect and high skin tolerance without compromise.

1. THE LATEST GENERATION OF HYDROXY ACIDS

A carefully balanced combination of AHAs incorporating a slow-release form of glycolic acid with the latest generation of PHA and AKA hydroxy acids. Delivers multi-layered skin exfoliation with minimal risk of irritation for instantly a visible skin renewal effect and anti-aging benefits day after day.

2. COMPLEMENTARY NATURAL ACTIVE INGREDIENTS FOR A RENEWED SKIN TEXTURE

These naturally-derived active ingredients (stabilized papaya enzyme, a combination of exfoliating from rice and silica-rich bamboo particles) boost the exfoliating benefits and offer brightening properties for an even, and radiant complexion.

3. A SKIN REPAIR BOOSTER TO BALANCE AND STRENGTHEN THE BARRIER FUNCTION

The integration of a specific active ingredient in our formulas optimizes the resurfacing action by promoting the skin's regeneration process, avoiding the redness and discomfort often associated with chemical peels.



1. A UNIQUE COMBINATION OF HYDROXY ACIDS: AHAS, PHAS AND AKAS

Hydroxy acids **weaken the "cellular glue" between dead cells**, encouraging their desquamation and revealing healthier, younger skin cells. The most commonly used is glycolic acid, an Alpha Hydroxy Acid particularly acclaimed by dermatologists for its overall resurfacing efficacy.

However, they can increase skin reactivity and cause irritation and redness in people with some form of sensitivity.

NOVAPEEL [AHA] formulas have therefore been designed to **ensure effective exfoliation for all skin types**, thanks to formulas combining an innovative form of glycolic acid and expert dosages of latest-generation hydroxy acids to **optimize the resurfacing action without putting a strain on the skin**.

This synergetic association approach based on the expert dosage of different acid structures ensures complementary biological targets and penetration depths of the acids into the skin's layers, optimizing peeling efficacy while minimizing side effects.

A. SLOW-RELEASE GLYCOLIC ACID

In the NOVAPEEL [AHA] serums, glycolic acid is combined with the amino acid arginine to create a new, patented amphoteric hydroxy-complex.

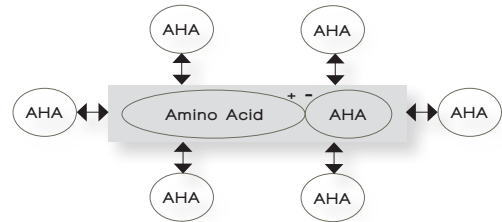
Hydroxy amphoteric complexes (HACs) offer the same benefits as AHAs, with less irritation. They contain the cation form of a complexing agent (like an amino acid), the anion of an AHA as well as undissociated AH molecules.

The slow-release form of glycolic acid used in the NOVAPEEL [AHA] serums complex consist in a combination of glycolic acid with the amino acid arginine.

This combination provides a powerful yet controlled exfoliating potential.

The slow-release form of glycolic acid used in the NOVAPEEL [AHA] enables:

- **A controlled-release** of glycolic acid into the skin
- The **avoidance of potentially irritating concentration peaks** in glycolic acid
- The usage of glycolic acid on delicate skin types



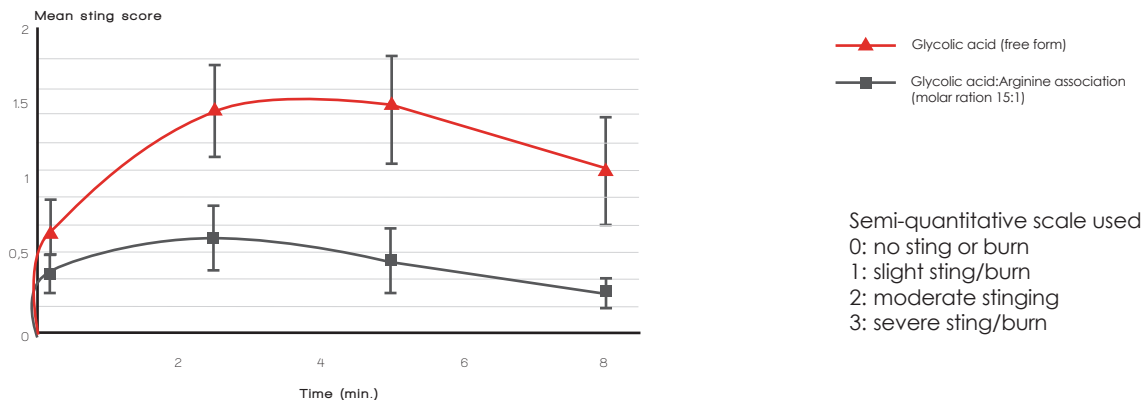
Arginine has a positive (cationic) charge which gives it a special affinity with the skin (a negatively charged surface).

Thanks to this positive charge, it creates a complex with the AHAs (the latter lose a hydrogen ion, become negatively charged and bind to arginine).

CLINICAL EFFICACY

Significantly reduced irritation threshold with the patented amphoteric hydroxy-complex (AHC) compared to a free-form of glycolic acid.*

Skin reactivity tests were carried out to prove the skin's increased tolerance to hydroxy amphoteric acid complexes.



The glycolic acid:arginine hydroxy amphoteric complex was found to be less irritating than the free form of glycolic acid.

Cell renewal rate accelerated by +34%*

Clinical study after 14 days based on the daily application of a formula containing a glycolic acid : arginine association at a 14.7% concentration. The results were similar to the equivalent free-form glycolic acid concentration.

The efficacy of the glycolic acid:arginine hydroxy amphoteric complex is similar to the efficacy of glycolic acid under the same conditions of concentration and pH.

* Both clinical studies were carried out on a panel of 17 female volunteers, aged between 25 and 59.

B. ALPHA HYDROXY ACID SYNERGY

By combining a variety of AHAs with different molecular weights and chemical structures, we can modulate the exfoliating action of glycolic acid and achieve complementary skin benefits on pigment irregularities, pH balance, hydration and inflammation.

1. MANDELIC ACID

Its large molecules make it the mildest AHA. It also has good skin-lightening properties.

2. TARTARIC ACID

Helps moisturize the skin, stimulates cell renewal and promotes epidermal healing.

3. MALIC ACID

Promotes hydration and reduces residual post-imperfection pigmentation marks.

4. LACTIC ACID

Moisturizing and astringent properties. Helps regulate skin pH.

5. CITRIC ACID

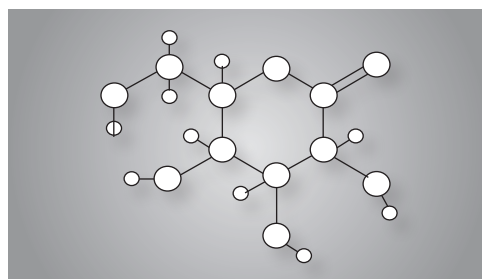
Reduces free-radical damage thanks to its antioxidant and anti-aging properties.



C. POLY HYDROXY ACID

The NOVAPEEL [AHA] formulas integrate Gluconolactone which hydrolyzes progressively to gluconic acid when in contact with water or an aqueous media. Depending on the pH, the gluconic acid is then partially or totally converted into gluconate.

It is therefore a mild, slow-release acid form suitable for sensitive skin and also acts as a moisturizing agent and pH regulator.



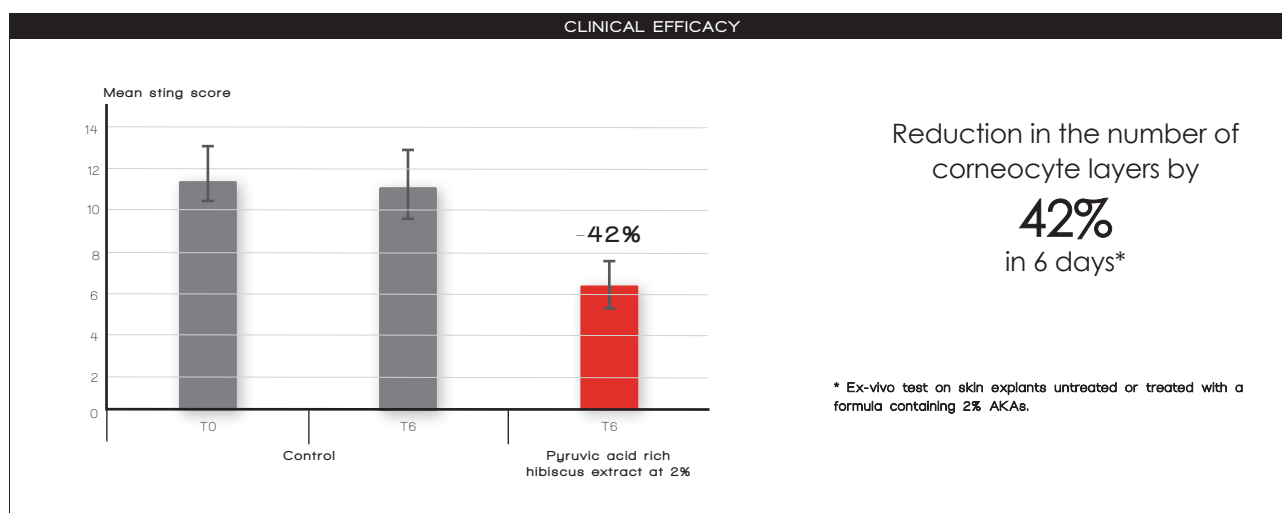
Gluconolactone

D. ALPHA KETO ACID

The pyruvic acid we used for NOVAPEEL [AHA] obtained from a hibiscus flower extract and offers a rapid absorption profile. Its lipophilic properties enable it to melt into the phospholipids of cell membranes.

It therefore offers a **gentle yet powerful peeling effect**, epidermal cell renewal with no side-effects.





In the NOVAPEEL [AHA] daily lotion, fluid and creams it is especially interesting for its anti-inflammatory properties which enables it to limit inflammation induced hyper-pigmentation reactions.

The appearance of hyper-pigmented spots is very often the result of cutaneous aggressions (stings, acne, burns, scratching lesions...) but also of significant oxidative stress due to environmental factors (pollution, UV...).

These various skin aggressors trigger the production of pro-inflammatory cytokines with pigmentogenic properties. Melanocytes are then activated, leading to a major release of melanosomes, which release their excess melanin, causing pigmentation spots to appear.

2. A COMPLEMENTARY SKIN PERFECTING COMPLEX

The hydroxy acids' action is enhanced by enzymatic and mechanical exfoliating active ingredients adapted to the specific different formula types. Additional benefits are also provided by plant extracts expertly chosen to target pigmentary irregularities due to photo-aging or post-inflammatory conditions.

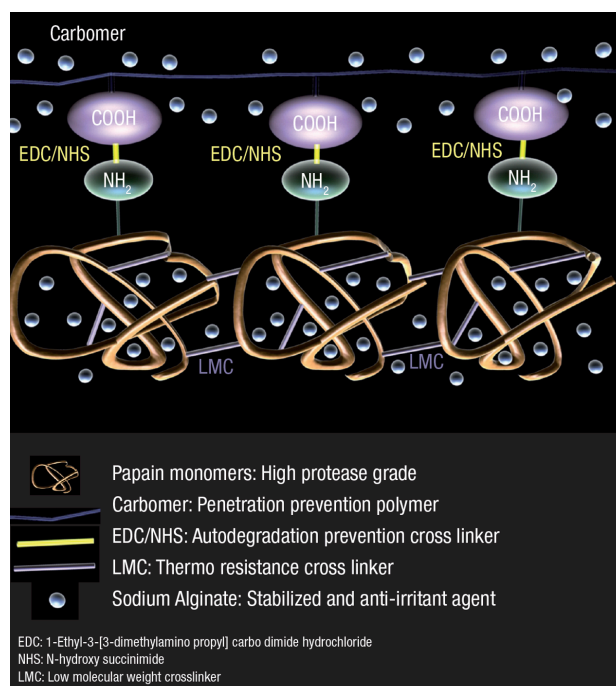
A. STABILIZED ENZYME

For the NOVAPEEL [AHA] range, ERICSON LABORATOIRE has therefore selected a cross-linked carbomer enzyme that is X5 more stable than its free form, thanks to a complex polymerization process that protects it from self-degradation. It consists in a high-molecular-weight cross-linked papain polymer that retains its protease activity.

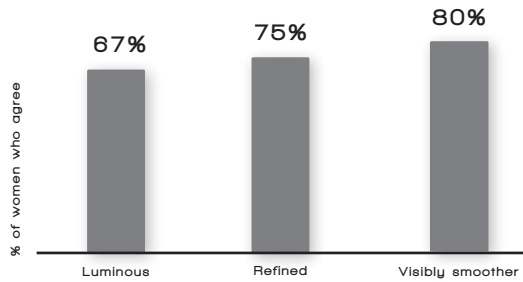
Papain is a protease isolated from papaya (*Carica papaya*) latex, known for its use in the pharmaceutical and cosmetics industries.

Sodium alginate was selected as the one of the key papain enzyme stabilizer. It is extracted from brown seaweed and minimizes the enzyme's irritant potential and also offers its emollient and soothing properties.

In the NOVAPEEL [AHA] range, the combination of this enzyme to hydroxy acids enhances the formulas' action on radiance, even skin tone and skin texture.



TESTED EFFICACY



Brighter, more luminous skin for **67%** of users *

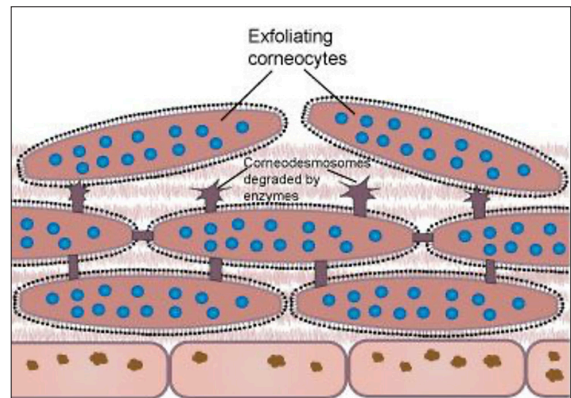
Refined skin texture for **75%** of users *

Visibly smoother skin for **80%** of users *

* Self-evaluation test on 49 volunteers based on a twice-daily use of a formula containing 1% cross-linked carbomer enzyme for 21 days.

The enzymatic peel efficacy is reinforced by the integration of a **Nopal cactus extract**. This naturally-derived innovative active principle stimulates the endogenous enzymatic exfoliation process by activating the natural production of kallikreins.

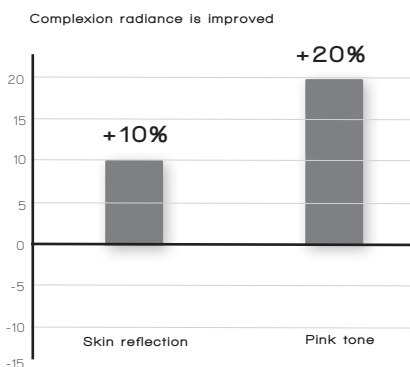
The natural exfoliation process is regulated by **Kallikrein-related peptidases (KLKs)**: these are serine proteases secreted from granular keratinocytes to the upper granular layer and cuticular space, which play important roles in the process of keratinocyte exfoliation. By **degrading corneodesmosomes**, they enable keratinocyte exfoliation.



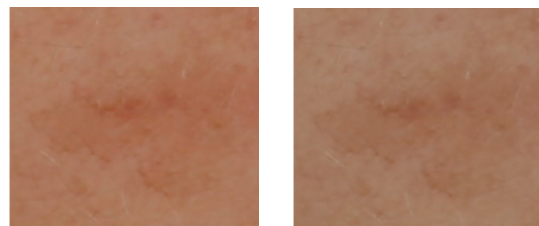
The prickly pear extract in NOVAPEEL [AHA] formulas significantly **increases KLK-5**.

A series of in vitro and in vivo tests confirmed its ability to boost the natural exfoliation capacity of the skin and promote cell renewal for an optimal barrier function. The skin is smoothed and hydrated, the complexion is more radiant and uniform. Acne scar marks are also visibly attenuated.

TESTED EFFICACY



Senescence spots are reduced by **11%****



* Digital photography based scoreage, conducted by experts, after 14 days of application of a formula containing 2.5% Nopal extract tested on a panel of 18 women.

**Visiblity analysls on VISIA®-CR acquired photography after 14 days of application of a formula containing 2.5% Nopal extract tested on a panel of 18 women.

B. BRIGHTENING ACTIVE INGREDIENTS

A variety of natural plant extracts have been selected to enhance the formulas' skin brightening properties: These substances are antioxidants with a key role in neutralizing free radicals, which generate inflammation. Their soothing effect also minimizes the appearance of post-inflammatory hyperpigmentation spots, by limiting the synthesis of:

- Inflammatory cytokines
- Phospholipase A2 inducing skin reactivity
- Endothelin-1: a molecule produced by keratinocytes after environmental aggression or oxidative stress and received by melanocyte membrane receptors to trigger melanogenesis.
- The production of tyrosinase: an amino acid that initiates melanin formation and is involved at various levels in melanin pigment maturation

Blackberry



Lotus



Licorice root



White lily



The selection of these different phyto-extracts enables us to work both on limiting the appearance of new spots (by reducing melanin production) and on lightening existing spots (by oxidizing the melanin produced).

C. EXFOLIATING PARTICLES

Present in the scrub, this combination of 2 types of particles:

- Silica-rich bamboo stem extract
- Rice powder

Thanks to their complementary granulometries, they provides an effective exfoliating action that can be adjusted according to whether it is used on dry or damp skin. They are also a more sustainable natural substitute to previously use aluminum crystals.

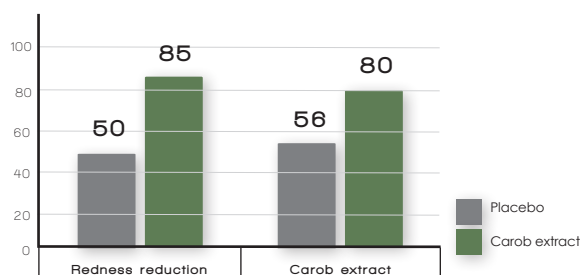


3. A SKIN REPAIR BOOSTER

The NOVAPEEL [AHA] range formulas include a carob extract, rich in oligosaccharides. These natural sugars help to reactivate the skin's natural regeneration processes and offer a dual repairing action on the epidermis and dermis, ensuring optimal communication between skin cells.

- Reactivates the various biological pathways involved in re-epithelialization by stimulating keratinocyte migration and epidermal differentiation, thus consolidating the epidermal barrier function for a more efficient healing process.
- Restores the dermal matrix renewal by increasing TGF-B synthesis and fibroblast migration, an endogenous process essential for maintaining the integrity of support tissue. Transforming Growth Factors-Beta play an important role in immune response and anti-inflammatory processes.
- Limits trans-epidermal water loss.

TESTED EFFICACY



Accelerates healing for **80%**
of users after 14 days*

Redness reduced for **85%**
of users after 14 days*

* Self-evaluation of 20 subjects after mechanical aggression caused by successive application of adhesives and following twice-daily application of a formula containing 3% of carob extract on one thigh and of a placebo formula on the other.

TECHNOLOGY HIGHLIGHTS

Chemical Exfoliation	Enzymatic Exfoliation	Mechanical Exfoliation	Skin brightening	Skin soothing
<p>GLYCOLIC ACID: MAIN ALPHA HYDROXY ACID</p> <p>Slow-release amphoteric complex form (glycolic acid combined with arginine) in the serums and scrub.</p> <p>Free-form in the other range formulas.</p>	<p>CROSS-LINKED PAPAYA ENZYME</p> <p>Very stable form.</p> <p>High molecular weight: limits its progressive action to epidermal top layers.</p>	<p>NATURAL EXFOLIATING PARTICLES</p> <p>Complementary granulometries.</p> <p>Extracted from rice and silica-rich bamboo stems.</p>	<p>SELECTED PIGMENTATION REGULATING & ANTI-INFLAMMATORY PHYTO-ACTIVES</p> <p>Blackberry, lotus, licorice root & white lily extracts.</p>	<p>OLIGO-SACCHARIDES-RICH CAROB EXTRACT</p> <p>Anti-redness and healing properties for accelerated global skin repair.</p>
<p>OTHER ALPHA HYDROXY ACIDS – AHAS</p> <p>Complement the glycolic acid's action thanks to their molecular weight related different absorption speeds and depths.</p> <p>Includes citric, lactic, malic, mandelic and tartaric forms depending on formulas.</p>				
<p>POLY HYDROXY ACID - PHA</p> <p>Gluconolactone with a high molecular weight for a progressive and gentle exfoliation.</p> <p>Used in the lotion and the fluid.</p>	<p>ENDOGENOUS PROTEASE STIMULATING ACTIVE PRINCIPLE</p> <p>Slow-release amphoteric acid Prickly pear extract: helps reactivate Kallikrein-related peptidases (KLKs).</p>			
<p>ALPHA KETO ACID – AKA</p> <p>Pyruvic acid with a low molecular weight with anti-inflammatory properties limiting irritation.</p> <p>Used in the lotion and the day creams.</p>				

THE NOVAPEEL [AHA] PROFESSIONAL TREATMENT

A **skin transforming protocol** offering similar results to a mild professional peel thanks to the use of a highly concentrated professional AHA serum and an expert combination of formulas integrating our latest peeling technology and comforting actives.

The result: instantly brighter and revitalized-looking skin, a more even and refined skin texture and no downtime.

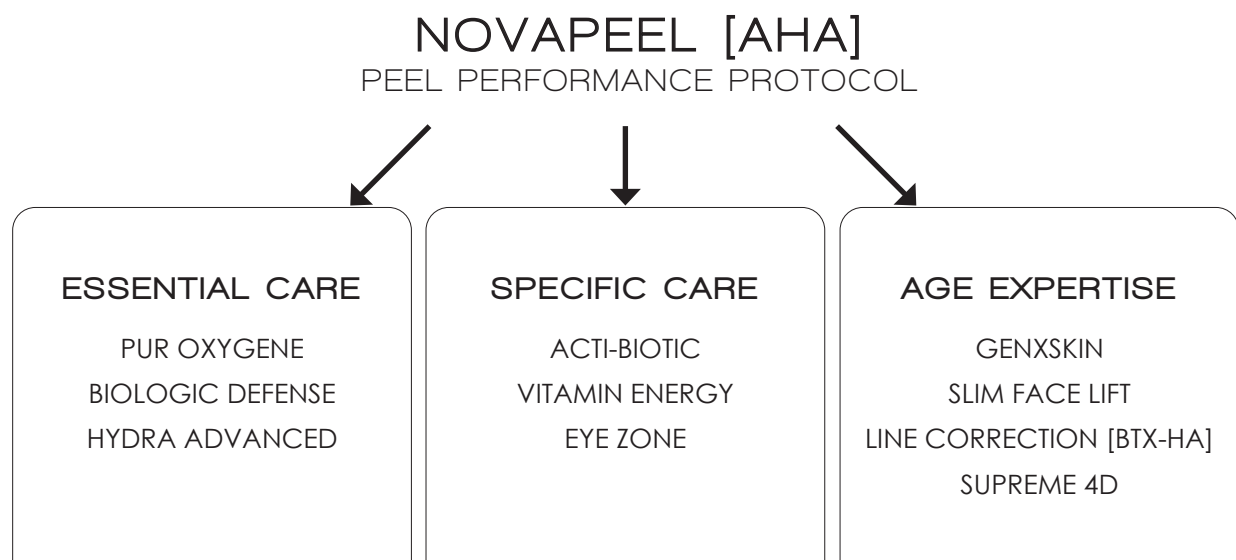
The protocol also includes the use of an ultrasonic exfoliating spatula to help get rid of dead skin cells and build-up while stimulating cell renewal and improve skin texture and tone.

Designed for all skin types and ages, thanks to its immediate and long-term benefits on skin tone and quality.

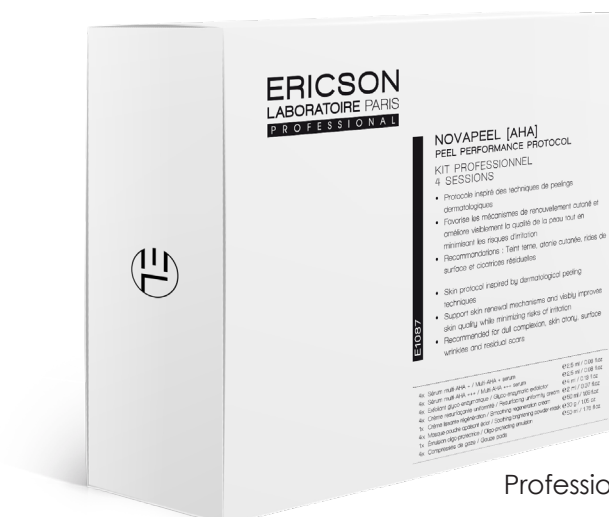
The NOVAPEEL [AHA] protocol offers a spectacular radiance-boosting effect from the very first session and can also be integrated into many types of skincare programs.

It can easily be integrated within a Multi-therapy program:

- As an intensive treatment for skin with surface irregularities, whatever their origin
- As a pre-treatment for anti-aging treatments
- In combination with specific treatments such as a radiance-boosting energizing expert treatment or a sebum-regulating treatment, for an enhanced purifying action and an additional efficacy against imperfections



It is important bear in mind that the skin is an entity that intervenes in connection with numerous physiological parameters. It is therefore essential to logically design the various Multi-therapy steps required to establish a personalized treatment for the customer, in order to achieve the desired results.



Professional 4 session kit

PREMEDIKL, SONIC SCRUBBER



The SONIC SCRUBBER is a professional ultra-sonic vibrating spatula used in 2 ways during the NOVAPEEL [AHA] treatment protocol thanks to its different usage modes.

1. Exfoliation Mode

The spatula's sonic oscillations thoroughly cleanse the skin after exfoliation by:

- Facilitating the elimination of dead cells
- Unclogging pores
- Smoothing skin texture

2. Phonophoresis mode

This mode uses ultra-sonic technology to enhance absorption of the serums' active ingredients into the epidermis. Ultra-sound enhances transdermal skin permeability and formula efficacy.



1. Exfoliation mode

2. Phonophoresis Mode

Before the first use:

- Remove the protective sealing film from SONIC SCRUBBER before use.
- Take time to charge the SONIC SCRUBBER as the battery will not be fully charged. The SONIC SCRUBBER comes with a convenient charging dock. When the USB charging cable is connected directly to the SONIC SCRUBBER or to the charging dock base with the SONIC SCRUBBER placed onto the base, its four white LEDs will flash continuously. Once the battery is fully charged, the four white LEDs will stop flashing and the screen will light up.

How to use:

- Unplug the USB charging cable from the SONIC SCRUBBER or remove it from its charging dock base.
- Press the ON/OFF button for 1 second to turn on or turn off the SONIC SCRUBBER.
- Select Exfoliation mode or Phonophoresis mode by briefly pressing the ON/OFF button to scroll through the operating mode icons on the screen.

Please note that once turned on, the SONIC SCRUBBER is programmed to stop automatically after 9 minutes. The time countdown is visible on the screen. Make sure that the skin is never dry when moving the spatula onto the skin. You can use it either over a cosmetic formula (cleanser or serum) or over moistened skin.

- For the Exfoliation mode, position the tool with the screen facing upwards.
- For the Phonophoresis mode, position the tool with the screen facing downwards.
- Gently glide the spatula over the face at a 45-degree angle as per recommended in the professional protocol video.

Warnings:

- Do not place the SONIC SCRUBBER under water. Use an antiseptic on a cotton pad to clean the spatula.
- After cleaning, always store the SONIC SCRUBBER in its case and in a dry place.
- Do not use on persons wearing a pacemaker or electrical implants.
- Do not use on pregnant women.

THE HOME USE PRODUCT RANGE



E1095	MULTI-AHA + SERUM	30 ml
E1099	GLYCO-ENZYMATIC EXFOLIATOR	50 ml
E1096	RESURFACING UNIFORMITY CREAM	50 ml
E1097	SMOOTHING REGENERATION CREAM	50 ml
E1098	BRIGHTENING PERFECTION FLUID	50 ml
E1100	LUMI-RENOVATING ESSENCE	125 ml

THE PROFESSIONAL PRODUCT RANGE



E1087	KIT 4 SESSIONS:	
E1088	MULTI-AHA + SERUM	2.5 ml x 4
E1089	MULTI-AHA +++ SERUM	2.5 ml x 4
E1090	GLYCO-ENZYMATIC EXFOLIATOR	4 ml x 4
E1091	RESURFACING UNIFORMITY CREAM	2 ml x 4
E1092	SMOOTHING REGENERATION CREAM	50 ml x 1
E1093	SOOTHING BRIGHTENING POWDER-MASK	30 g x 4
E1094	OLIGO-PROTECTING EMULSION	50 ml x 4



THE NOVAPEEL [AHA] PROFESSIONAL PROTOCOL

When using one or more products in the NOVAPEEL [AHA] range, always read and follow the safety instructions carefully:















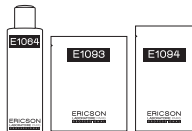





Avoid eye contact. In case of eye contact, rinse thoroughly with clear water. In case of irritation or persisting discomfort, cease using the product and consult a doctor. It is recommended to avoid the use of the product before or during sun exposure.

Before any sun exposure, it is recommended to use sunscreen where the product has been applied.

EXFOLIATE

POLISH & BRIGHTEN

SOOTHE

1		MAKE-UP REMOVAL – CLEANSING Cleanse the face and neck with the appropriate milk and toning lotion or with SEBO-SAVON E151, according to the skin needs.	 5 min.
2		EXFOLIATION Apply GLYCO-ENZYMATIC EXFOLIATOR E1090 to the entire face and neck, using damp fingers with gentle, circular movements.	 5 min.
3		SONIC SCRUBBER Use SONIC SCRUBBER E1107 on Exfoliation mode to remove the scrub starting from the neck and moving slowly and steadily towards the forehead. Make sure the formula is well moistened before using the tool. Cleanse the face and neck with water, following with the appropriate lotion.	 7 min.
4		SERUM APPLICATION Apply MULTI-AHA + SERUM E1088 to the entire face and neck, starting on the T-Zone, avoiding the eye contour area. Leave it on for 5 minutes.	 6 min.
5		SERUM APPLICATION Apply the MULTI-AHA +++ SERUM E1089 all over the face and neck starting on the T-Zone, avoiding the eye contour area.	 4 min.
6		SONIC SCRUBBER Use SONIC SCRUBBER E1107 on Phonophoresis mode from the neck to the forehead smoothly with gentle movements, for a synergetic action with the serums.	 8 min.
7		MASSAGE Apply SMOOTHING REGENERATION CREAM E1092 to the entire face and neck, and proceed to a relaxing and smoothing massage.	 15 min.
8		MASK APPLICATION On each eyelid, place 2 cotton pads soaked in EYE ZONE PHYTO-CALMING LOTION E1064. Spread the gauze over the face and neck with a lifting effect. Mix one sachet of SOOTHING BRIGHTENING POWDER-MASK E1093 with one sachet of OLIGO-PROTECTING EMULSION E1094. With a spatula, apply the mask to the entire face and neck, leave on for 20 minutes.	 3 min.  20 min
9		MASK REMOVAL Gently remove the gauze, cleanse the face and neck with water, following with the toning lotion.	 2 min
10		MODELING Apply RESURFACING UNIFORMITY CREAM E1091 to the entire face and neck with gentle strokes to finalize the treatment.	 2 min

4-SESSION
TREATMENT

TREATMENT LENGTH
75 MINUTES

TREATMENT FREQUENCY
ONCE A WEEK

LUMI-RENOVATING ESSENCE

Tones, brightens and exfoliates in one swipe. The blend of exfoliating, hydrating and brightening ingredients will help the skin feel silky smooth, visibly tighten pores and help balance moisture levels for a long-lasting glow.

BENEFITS & RECOMMENDATION

- Lightly textured resurfacing lotion combining glycolic acid, a PHA and a combination of complementary AHAs. Offers a progressive dual peeling and brightening action. Designed as an essential pre-care formula to optimize the daily peeling routine.
- Recommended for all skin types including delicate.

DIRECTIONS FOR USE

- **At home:** apply in the evening on cleansed skin with a soaked cotton pad, before the recommended serum and/or the night cream and avoiding the eye contour. On more sensitive skin, start by applying every other evening for 10 days, then move on to an application every evening once the skin has built up tolerance.

ACTIVE INGREDIENTS

- **Glycolic acid (AHA)**
- **Complementary AHAs:** lactic, citric, malic, and tartaric acid
- **Gluconolactone (PHA):** for gentle exfoliation and skin barrier repair
- **Pyruvic acid:** Alpha Keto Acid (AKA): extracted from hibiscus flowers for a rapid action yet non-irritating exfoliation
- **Prickly pear extract:** helps reactivate endogenous enzyme activity
- **Centella Asiatica extract:** calming and repairing properties
- **Meadowsweet extract:** anti-inflammatory and astringent properties
- **Glycerin & Urea:** hydrates and softens

PRESENTATION

- **Retail:** 125 ml bottle – Ref. E1100.
- **Professional use:** not available.



GLYCO-ENZYMATIC EXFOLIATOR

Inspired by micro-dermabrasion procedures, this triple action scrub combines 3 exfoliation types. The exfoliating particles remove dead surface cells to smooth the skin surface, enzymes dissolve remaining dulling to reveal a fresh, radiant complexion and AHAs stimulate the cell renewal process. A must-have formula for oily skin types prone to imperfections.

BENEFITS & RECOMMENDATION

- Triple keratolytic efficiency combining AHAs, enzymes and silica-rich natural exfoliating particles for a visible skin resurfacing and polishing action.
- Smoothens the skin's micro-relief and stimulates cell renewal for a refined skin texture and clarified complexion.
- Recommended for all skin types including delicate. On oily to normal skin types, apply on clean dry skin. On drier and more sensitive skin types, apply on a clean dampened skin.

DIRECTIONS FOR USE

- **At home:** apply to cleansed dry or damp face and neck. Massage with circular motions for 2 to 3 minutes. Rinse thoroughly. Use 1 to 2 times a week. It is recommended to avoid the use of the product before or during sun exposure. Before any sun exposure, it is recommended to use sunscreen where the product has been applied.
- **Professional use:** apply to cleansed damp face and neck. Massage with circular motions for 1 to 2 minutes. Then use SONIC SCRUBBER E1107 in exfoliation mode to remove the scrub starting from the neck and moving slowly and steadily towards the forehead. Make sure the formula stays well moistened when using the tool. Refer to professional protocol.

ACTIVE INGREDIENTS

- **Slow-release Glycolic acid (AHA):** synergy of glycolic acid and arginine for a gradual and controlled exfoliation
- **Complementary AHAs:** lactic, citric and mandelic acid
- **Cross-linked papaya enzyme:** gentle and lasting exfoliating efficacy
- **Exfoliating rice & bamboo particles:** micro-fine particles from bamboo stem exudate are combined with rice powder to offer the perfect abrasion level for a skin polishing effect
- **Plant-derived glycerin & squalane:** hydrates and softens

PRESENTATION

- **Retail:** 50 ml tube – Ref. E1099.
- **Professional use:** 4 x 4 ml sachet – Ref. E1090 included in the E1087 4 session kit.



MULTI-AHA + SERUM

This cosmeceutical peeling serum combines powerful ingredients that exfoliate the skin and improve the appearance of skin tone and texture while ensuring optimal skin tolerance thanks to an innovative form of slow-release glycolic acid, barrier function boosting, complementary AHAs and melanin-regulating natural extracts. The secret to a brighter and smoother skin upon awakening.

BENEFITS & RECOMMENDATION

- Glycolic acid resurfacing serum. Contains the maximum AHA concentration of 10% for at-home use with a pH at 4 combined with 4% enzymatic exfoliating booster and brightening plant extracts to address both skin texture and pigmentation concerns overnight, when the skin regeneration process is optimal.
- The epidermis is visibly smoothed, the complexion unified and clarified.
- Recommended for all skin types including delicate.

DIRECTIONS FOR USE

- **At home:** shake before use. Apply in the evening on a perfectly cleansed skin, avoiding the eye area, before the recommended night cream. On more sensitive skin, start by applying every other evening for 10 days, then move on to an application every evening once the skin has built up tolerance.
- **Professional use:** shake before use. Apply to the entire face and neck, starting with the T-zone and avoiding the eye contour area. Refer to professional protocol.

ACTIVE INGREDIENTS

- **Slow-release Glycolic acid (AHA):** synergy of glycolic acid and arginine for a gradual and controlled exfoliation
- **Complementary AHAs:** lactic, citric and mandelic acid
- **Prickly pear extract:** helps reactivate endogenous enzyme activity
- **Green tea extract:** decongesting properties
- **Lotus extract:** unifying properties

PRESENTATION

- **Retail:** 30 ml pump bottle – Ref. E1095.
- **Professional use:** 4 x 2.5 ml vial – Ref. E1088 included in the E1087 4 session kit.



RETAIL
E1095



SAMPLE
H1101



PRO USE
E1088

MULTI-AHA +++ SERUM

This professional grade peeling serum delivers exceptional skin transforming results as of the first treatment session. Highly potent, it also ensures optimal skin tolerance thanks to an innovative form of slow-release glycolic acid and barrier function boosting complementary AHAs combined with soothing and complexion unifying natural extracts.

BENEFITS & RECOMMENDATION

- Glycolic acid resurfacing serum. Contains the maximum AHA concentration of 30% for professional use with a pH between 3 and 3.5 combined with 4% enzymatic exfoliating booster and brightening plant extracts to address both skin texture and pigmentation concerns.
- The epidermis is visibly smoothed, the complexion unified and clarified.

DIRECTIONS FOR USE

- **Professional use:** shake before use. Apply to the entire face and neck, starting with the T-zone and avoiding the eye contour area. Before using the serum, we recommend the application of 2 cotton pads soaked in EYE ZONE phyto-calming lotion to the eyelids to protect this extra sensitive zone. Refer to professional protocol.

ACTIVE INGREDIENTS

- **Slow-release Glycolic acid (AHA):** synergy of glycolic acid and arginine for a gradual and controlled exfoliation
- **Complementary AHAs:** lactic, citric and mandelic acid
- **Prickly pear extract:** helps reactivate endogenous enzyme activity
- **Ruscus extract:** decongesting and soothing properties thanks to its high flavanoid content
- **Blackberry extract:** brightening properties

PRESENTATION

- **Retail:** not available
- **Professional use:** 4 x 2.5 ml vial – Ref. E1089 included in the E1087 4 session kit.



PRO USE
E1089

BRIGHTENING PERFECTION FLUID

This lightweight refining and smoothing moisturizer also helps to even out skin tone and gradually minimize pigmentation irregularities. It contains a daily-use compatible percentage of glycolic acid combined with complementary AHAs, PHAs and AKAs to offer an overall skin texture improvement, and brightening plants extract to promote a radiant and even complexion. Its non-greasy texture is appreciated by male consumers too.

BENEFITS & RECOMMENDATION

- Non-greasy fluid formulated with an expert blend of hydroxy acids to offer a progressive peeling effect while promoting hydration and reinforcing the skin's barrier function. Smoothens, evens out skin texture, unifies complexion and boosts radiance.
- Recommended for normal or combination skin types prone to shine.

DIRECTIONS FOR USE

- **At home:** apply as a day and/or night care, either by itself or after the recommended serum. It is recommended to avoid the use of the product before or during sun exposure. Before any sun exposure, it is recommended to use sunscreen where the product has been applied.

ACTIVE INGREDIENTS

- **Glycolic acid (AHA)**
- **Complementary AHAs:** lactic, citric, malic and tartaric acid
- **Gluconolactone (PHA):** for gentle exfoliation and skin barrier repair
- **Pyruvic acid (AKA):** extracted from hibiscus flowers for a rapid action yet non-irritating exfoliation
- **Prickly pear extract:** helps reactivate endogenous enzyme activity
- **Oligosaccharides (Carob):** regenerating and healing properties
- **Lily extract:** brightening properties
- **Lemon balm water:** soothing properties

PRESENTATION

- **Retail:** 50 ml tube – Ref. E1098.
- **Professional use:** not available.



RESURFACING UNIFORMITY CREAM

This comforting yet not greasy moisturizing cream also helps to smoothen the skin's micro-relief and gradually minimize pigmentation irregularities. It contains a daily-use compatible percentage of glycolic acid combined with complementary AHAs and AKAs to offer a progressive skin texture refining action and brightening plant extracts to promote a luminous and even complexion.

BENEFITS & RECOMMENDATION

- Silky gradual peeling effect cream formulated with an expert blend of hydroxy acids to offer a gentle progressive exfoliation while promoting hydration and reinforcing the skin's barrier function. Visibly retexturizes, unifies and perfects the skin and boosts its luminosity.
- Recommended for all skin types.

DIRECTIONS FOR USE

- **At home:** apply as a day and/or night care, either by itself or after the recommended serum. It is recommended to avoid the use of the product before or during sun exposure. Before any sun exposure, it is recommended to use sunscreen where the product has been applied.
- **Professional use:** apply to the entire face and neck with gentle strokes to finalize the treatment. Refer to professional protocol.

ACTIVE INGREDIENTS

- **Glycolic acid (AHA)**
- **Complementary AHAs:** lactic, citric, malic and tartaric acid
- **Pyruvic acid (AKA):** extracted from hibiscus flowers for a rapid action yet non-irritating exfoliation
- **Prickly pear extract:** helps reactivate endogenous enzyme activity
- **Oligosaccharides (Carob):** regenerating and healing properties
- **Licorice extract:** brightening properties
- **Witch hazel water:** soothing properties

PRESENTATION

- **Retail:** 50 ml jar – Ref. E1096.
- **Professional use:** 4 x 2 ml sachet – Ref. E1091 included in the E1087 4 session kit.



SMOOTHING REGENERATION CREAM

This rich and nourishing moisturizing cream also helps to even out skin tone and gradually minimize pigmentation irregularities. It contains a daily-use compatible percentage of glycolic acid combined with complementary AHAs and AKAs to offer a progressive skin texture refining action, brightening plant extracts to promote a radiant and even complexion, and nourishing naturally-derived ingredients to normalize hydro-lipidic levels.

BENEFITS & RECOMMENDATION

- Rich gradual peeling effect cream formulated with an expert blend of hydroxy acids to offer a gentle progressive exfoliation while promoting hydration, nutrition, and reinforcing the skin's barrier function.
- Nourishing and revitalizing active ingredients offer added anti-aging benefits. Minimizes signs of photo-aging and visibly improves skin quality, smoothness and softness.
- Recommended for mature and/or dryness prone skin types.

DIRECTIONS FOR USE

- **At home:** apply as a day and/or night care, either by itself or after the recommended serum. It is recommended to avoid the use of the product before or during sun exposure. Before any sun exposure, it is recommended to use sunscreen where the product has been applied.
- **Professional use:** apply to the entire face and neck and proceed to a relaxing and smoothing massage. Refer to professional protocol.

ACTIVE INGREDIENTS

- **Glycolic acid (AHA)**
- **Complementary AHAs:** lactic, citric, malic and tartaric acid
- **Pyruvic acid (AKA):** extracted from hibiscus flowers for a rapid action yet non-irritating exfoliation.
- **Prickly pear extract:** helps reactivate endogenous enzyme activity.
- **Oligosaccharides (Carob):** regenerating and healing properties
- **Arnica extract:** anti-inflammatory properties
- **Ginkgo biloba:** decongestant properties
- **Royal jelly extract:** revitalizing properties
- **Shea Butter:** nourishing and healing properties

PRESENTATION

- **Retail:** 50 ml jar – Ref. E1097.
- **Professional use:** 50 ml tube – Ref. E1092 included in the E1087 4 session kit.



RETAIL
E1097



SAMPLE
H1103



PRO USE
E1092

SOOTHING BRIGHTENING POWDER-MASK

Offers an instantly calming and cooling sensation after the potential slight stinging of the professional glycolic serum.

BENEFITS & RECOMMENDATION

- A refreshing, soothing peel-off alginate mask. Mixed with the OLIGO-PROTECTING EMULSION, it boosts the absorption of the emulsion's active ingredients and previously applied products. Instantly tones and brings radiance to the skin.

DIRECTIONS FOR USE

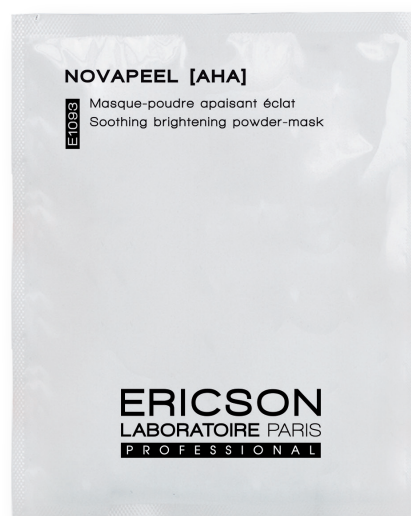
- **Professional use:** using a spatula, mix 1 sachet of SOOTHING BRIGHTENING POWDER-MASK E1093 with 1 sachet of OLIGO-PROTECTING EMULSION E1094. Apply the mask in a medium layer with a spatula to cover the gauze strips. You can tighten the gauze for a toning and lifting effect. Refer to professional protocol.

ACTIVE INGREDIENTS

- **Alginate**
- **Mineral complex:** soothing and protective properties
- **Vitamins B3 & B6:** anti-inflammatory, regenerating and healing properties
- **Vitamin C:** brightening properties

PRESENTATION

- **Retail:** not available.
- **Professional use:** 4 x 30g sachet – Ref. E1093 included in the E1087 4 session kit.



PRO USE
E1093

OLIGO-PROTECTING EMULSION

This algin-rich moisturizing emulsion replaces the water traditionally mixed with an alginate powder base to form the mask. This facilitates the mixing phase and gives the mask's texture an extreme smoothness and spreadability.

BENEFITS & RECOMMENDATION

- A gentle emulsion to mix with SOOTHING BRIGHTENING POWDER-MASK. It offers a soothing and revitalizing effect and helps reinforce the hydrolipidic film.

DIRECTIONS FOR USE

- **Professional use:** mix 1 sachet of SOOTHING BRIGHTENING POWDER-MASK E1093 with 1 sachet of OLIGO-PROTECTING EMULSION E1094. Refer to professional protocol.

ACTIVE INGREDIENTS

- **Seaweed extracts and plant-derived gums:** essential to the occlusive film formation
- **Marine trace elements:** revitalizing properties
- **Sweet almond oil:** repairing and protective properties
- **Glycerin:** moisturizing properties

PRESENTATION

- **Retail:** not available.
- **Professional use:** 4 x 50 ml sachet – Ref. E1094 included in the E1087 4 session kit.



PRO USE
E1094